

A10330

Leader in Biomolecular Solutions for Life Science



## MS4A8B Rabbit pAb

Catalog No.: A10330

### Basic Information

**Observed MW**

26kDa

**Calculated MW**

26kDa

**Category**

Mouse Monoclonal Antibody

**Applications**

WB, ELISA

**Cross-Reactivity**

Human

### Background

This gene encodes a member of the membrane-spanning 4A gene family. Members of this protein family are characterized by common structural features and similar intron/exon splice boundaries and display unique expression patterns among hematopoietic cells and nonlymphoid tissues. The gene encoding this protein is localized to 11q12.3, among a cluster of family members.

### Recommended Dilutions

WB 1:500 - 1:2000

### Immunogen Information

**Gene ID**

83661

**Swiss Prot**

Q9BY19

**Immunogen**

A synthetic peptide corresponding to a sequence within amino acids 100-200 of human MS4A8B (NP\_113645.1).

**Synonyms**

MS4A4; 4SPAN4; CD20L5; MS4A8B

### Contact



[www.abclonal.com](http://www.abclonal.com)

### Product Information

**Source**

Rabbit

**Isotype**

IgG

**Purification**

Affinity purification

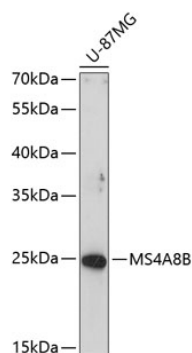
**Storage**

Store at -20°C. Avoid freeze / thaw cycles.

Buffer: PBS with 0.02% sodium azide, 50% glycerol, pH 7.3.

## Validation Data

---



Western blot analysis of extracts of U-87MG cells, using MS4A8B antibody (A10330) at 1:1000 dilution.  
Secondary antibody: HRP Goat Anti-Rabbit IgG (H+L) (AS014) at 1:10000 dilution.  
Lysates/proteins: 25µg per lane.  
Blocking buffer: 3% nonfat dry milk in TBST.  
Detection: ECL Enhanced Kit (RM00021).  
Exposure time: 90s.