

A10322

Leader in Biomolecular Solutions for Life Science



## LEPRE1 Rabbit pAb

Catalog No.: A10322

### Basic Information

**Observed MW**

100kDa

**Calculated MW**

83kDa

**Category**

Polyclonal Antibody

**Applications**

WB, ELISA

**Cross-Reactivity**

Human

### Background

This gene encodes an enzyme that is a member of the collagen prolyl hydroxylase family. These enzymes are localized to the endoplasmic reticulum and their activity is required for proper collagen synthesis and assembly. Mutations in this gene are associated with osteogenesis imperfecta type VIII. Three alternatively spliced transcript variants encoding different isoforms have been described. Other variants may exist, but their biological validity has not been determined.

### Recommended Dilutions

WB 1:1000 - 1:2000

### Immunogen Information

**Gene ID**

64175

**Swiss Prot**

Q32P28

**Immunogen**

Recombinant fusion protein containing a sequence corresponding to amino acids 497-736 of human LEPRE1 (NP\_071751.3).

**Synonyms**

OI8; GROS1; LEPRE1

### Contact



[www.abclonal.com](http://www.abclonal.com)

### Product Information

**Source**

Rabbit

**Isotype**

IgG

**Purification**

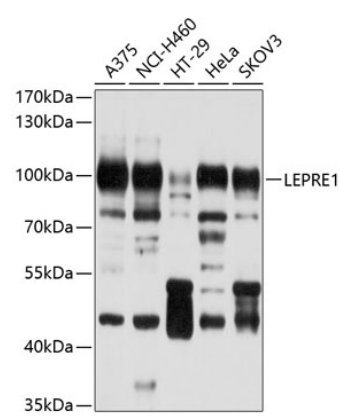
Affinity purification

**Storage**

Store at -20°C. Avoid freeze / thaw cycles.

Buffer: PBS with 0.02% sodium azide, 50% glycerol, pH 7.3.

Validation Data



Western blot analysis of extracts of various cell lines, using LEPRE1 antibody (A10322) at 1:1000 dilution.  
Secondary antibody: HRP Goat Anti-Rabbit IgG (H+L) (AS014) at 1:10000 dilution.  
Lysates/proteins: 25µg per lane.  
Blocking buffer: 3% nonfat dry milk in TBST.  
Detection: ECL Basic Kit (RM00020).  
Exposure time: 30s.