

A10321

Leader in Biomolecular Solutions for Life Science



LRRC4 Rabbit pAb

Catalog No.: A10321

1 Publications

Basic Information

Observed MW

73kDa

Calculated MW

73kDa

Category

Mouse Monoclonal Antibody

Applications

WB, ELISA

Cross-Reactivity

Human, Mouse, Rat

Background

Predicted to be involved in modulation of chemical synaptic transmission and synapse organization. Predicted to act upstream of or within synapse organization. Predicted to be located in neuron spine and postsynaptic membrane. Predicted to be active in Schaffer collateral - CA1 synapse; glutamatergic synapse; and plasma membrane. Predicted to be integral component of postsynaptic density membrane.

Recommended Dilutions

WB 1:1000 - 1:2000

Immunogen Information

Gene ID

64101

Swiss Prot

Q9HBW1

Immunogen

Recombinant fusion protein containing a sequence corresponding to amino acids 544-653 of human LRRC4 (NP_071426.1).

Synonyms

NAG14; NGL-2; LRRC4

Contact



www.abclonal.com

Product Information

Source

Rabbit

Isotype

IgG

Purification

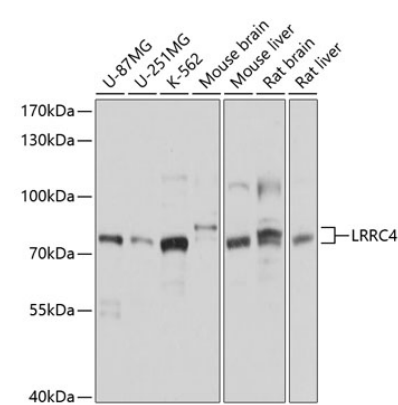
Affinity purification

Storage

Store at -20°C. Avoid freeze / thaw cycles.

Buffer: PBS with 0.02% sodium azide, 50% glycerol, pH7.3.

Validation Data



Western blot analysis of extracts of various cell lines, using LRRC4 antibody (A10321) at 1:1000 dilution.
Secondary antibody: HRP Goat Anti-Rabbit IgG (H+L) (A5014) at 1:10000 dilution.
Lysates/proteins: 25µg per lane.
Blocking buffer: 3% nonfat dry milk in TBST.
Detection: ECL Basic Kit (RM00020).
Exposure time: 1s.