

A1026

Leader in Biomolecular Solutions for Life Science



14-3-3 sigma Rabbit pAb

Catalog No.: A1026

1 Publications

Basic Information

Observed MW

28kDa

Calculated MW

28kDa

Category

Polyclonal Antibody

Applications

WB, IHC-P, ELISA

Cross-Reactivity

Human, Mouse, Rat

Background

This gene encodes a cell cycle checkpoint protein. The encoded protein binds to translation and initiation factors and functions as a regulator of mitotic translation. In response to DNA damage this protein plays a role in preventing DNA errors during mitosis.

Recommended Dilutions

| | |
|-------|----------------|
| WB | 1:500 - 1:1000 |
| IHC-P | 1:50 - 1:200 |

Immunogen Information

Gene ID

2810

Swiss Prot

P31947

Immunogen

A synthetic peptide corresponding to a sequence within amino acids 1-100 of human 14-3-3 sigma (NP_006133.1).

Synonyms

YWHAS; 14-3-3 sigma

Contact



www.abclonal.com

Product Information

Source

Rabbit

Isotype

IgG

Purification

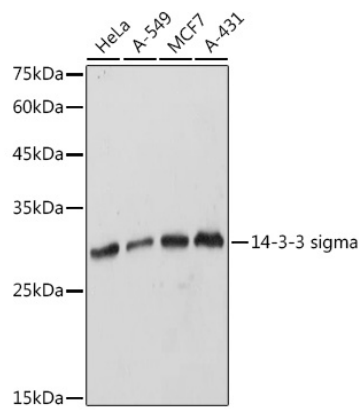
Affinity purification

Storage

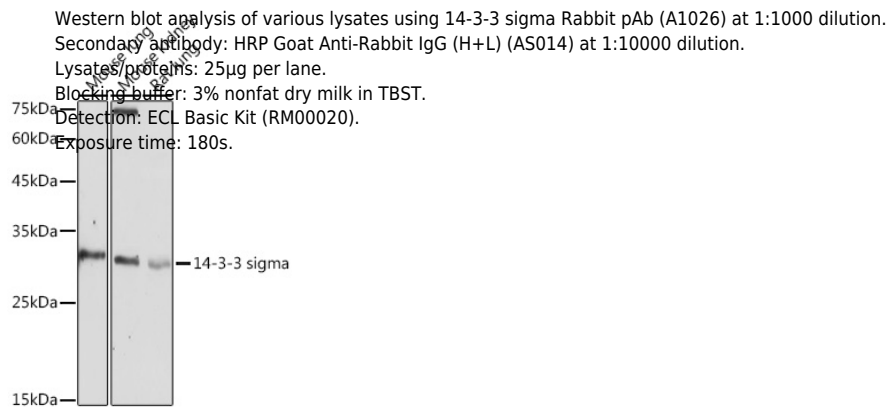
Store at -20°C. Avoid freeze / thaw cycles.

Buffer: PBS with 0.01% thimerosal, 50% glycerol, pH 7.3.

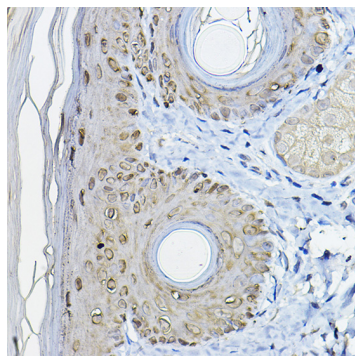
Validation Data



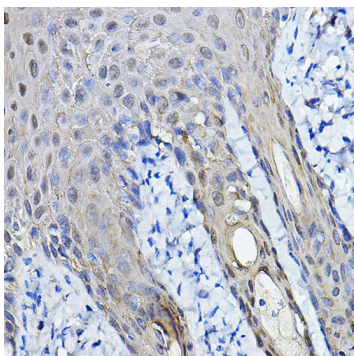
Western blot analysis of various lysates using 14-3-3 sigma Rabbit pAb (A1026) at 1:1000 dilution.
Secondary antibody: HRP Goat Anti-Rabbit IgG (H+L) (AS014) at 1:10000 dilution.
Lysates/proteins: 25µg per lane.
Blocking buffer: 3% nonfat dry milk in TBST.
Detection: ECL Basic Kit (RM00020).
Exposure time: 1s.



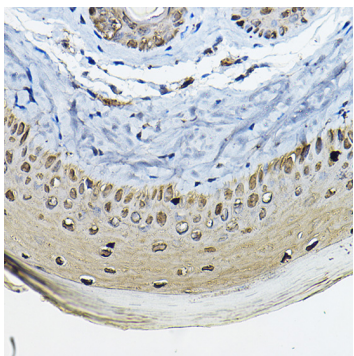
Western blot analysis of various lysates using 14-3-3 sigma Rabbit pAb (A1026) at 1:1000 dilution.
Secondary antibody: HRP Goat Anti-Rabbit IgG (H+L) (AS014) at 1:10000 dilution.
Lysates/proteins: 25µg per lane.
Blocking buffer: 3% nonfat dry milk in TBST.
Detection: ECL Basic Kit (RM00020).
Exposure time: 180s.



Immunohistochemistry analysis of 14-3-3 sigma in paraffin-embedded rat skin using 14-3-3 sigma Rabbit pAb (A1026) at dilution of 1:100 (40x lens).Perform high pressure antigen retrieval with 10 mM citrate buffer pH 6.0 before commencing with IHC staining protocol.



Immunohistochemistry analysis of 14-3-3 sigma in paraffin-embedded human skin using 14-3-3 sigma Rabbit pAb (A1026) at dilution of 1:100 (40x lens).Perform high pressure antigen retrieval with 10 mM citrate buffer pH 6.0 before commencing with IHC staining protocol.



Immunohistochemistry analysis of 14-3-3 sigma in paraffin-embedded mouse skin using 14-3-3 sigma Rabbit pAb (A1026) at dilution of 1:100 (40x lens).Perform high pressure antigen retrieval with 10 mM citrate buffer pH 6.0 before commencing with IHC staining protocol.