

A10256

Leader in Biomolecular Solutions for Life Science



## PLA2G10 Rabbit pAb

Catalog No.: A10256

### Basic Information

#### Observed MW

18kDa

#### Calculated MW

18kDa

#### Category

Polyclonal Antibody

#### Applications

WB, ELISA

#### Cross-Reactivity

Human

### Background

This gene encodes a member of the phospholipase A2 family of proteins. Alternative splicing results in multiple transcript variants, at least one of which encodes a preproprotein that is proteolytically processed to generate the mature enzyme. This calcium-dependent enzyme hydrolyzes glycerophospholipids to produce free fatty acids and lysophospholipids. In one example, this enzyme catalyzes the release of arachidonic acid from cell membrane phospholipids, thus playing a role in the production of various inflammatory lipid mediators, such as prostaglandins. The encoded protein may promote the survival of breast cancer cells through its role in lipid metabolism.

### Recommended Dilutions

WB 1:500 - 1:2000

### Immunogen Information

#### Gene ID

8399

#### Swiss Prot

O15496

#### Immunogen

A synthetic peptide corresponding to a sequence within amino acids 50-150 of human PLA2G10 (NP\_003552.1).

#### Synonyms

SPLA2; GXPLA2; GXPLA2; sPLA2-X; PLA2G10

### Contact



[www.abclonal.com](http://www.abclonal.com)

### Product Information

#### Source

Rabbit

#### Isotype

IgG

#### Purification

Affinity purification

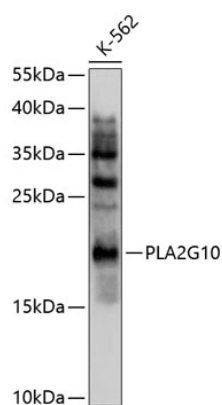
#### Storage

Store at -20°C. Avoid freeze / thaw cycles.

Buffer: PBS with 0.02% sodium azide, 50% glycerol, pH 7.3.

## Validation Data

---



Western blot analysis of lysates from K562 cells, using PLA2G10 Rabbit pAb (A10256) at 1:1000 dilution.  
Secondary antibody: HRP Goat Anti-Rabbit IgG (H+L) (A5014) at 1:10000 dilution.  
Lysates/proteins: 25µg per lane.  
Blocking buffer: 3% nonfat dry milk in TBST.  
Detection: ECL Basic Kit (RM00020).  
Exposure time: 90s.