

A10244

Leader in Biomolecular Solutions for Life Science



## SLC1A7 Rabbit pAb

Catalog No.: A10244

### Basic Information

**Observed MW**

72kDa

**Calculated MW**

61kDa

**Category**

Polyclonal Antibody

**Applications**

WB, ELISA

**Cross-Reactivity**

Mouse

### Background

Predicted to enable anion transmembrane transporter activity. Involved in neurotransmitter reuptake. Predicted to be located in plasma membrane. Predicted to be active in glutamatergic synapse. Predicted to be integral component of postsynaptic membrane and integral component of presynaptic membrane.

### Recommended Dilutions

WB 1:500 - 1:2000

### Immunogen Information

**Gene ID**

6512

**Swiss Prot**

O00341

**Immunogen**

Recombinant fusion protein containing a sequence corresponding to amino acids 480-560 of human SLC1A7 (NP\_006662.3).

**Synonyms**

AAAT; EAAT5; SLC1A7

### Contact



[www.abclonal.com](http://www.abclonal.com)

### Product Information

**Source**

Rabbit

**Isotype**

IgG

**Purification**

Affinity purification

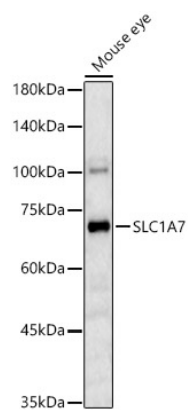
**Storage**

Store at -20°C. Avoid freeze / thaw cycles.

Buffer: PBS with 0.02% sodium azide, 50% glycerol, pH 7.3.

## Validation Data

---



Western blot analysis of Mouse eye, using SLC1A7 Rabbit pAb (A10244) at 1:1000 dilution.  
Secondary antibody: HRP Goat Anti-Rabbit IgG (H+L) (A5014) at 1:10000 dilution.  
Lysates/proteins: 25ug per lane.  
Blocking buffer: 3% nonfat dry milk in TBST.  
Detection: ECL Basic Kit (RM00020).  
Exposure time: 180s.