

A10239

Leader in Biomolecular Solutions for Life Science



TMPRSS15 Rabbit pAb

Catalog No.: A10239

Basic Information

Observed MW

113kDa

Calculated MW

113kDa

Category

Polyclonal Antibody

Applications

WB, ELISA

Cross-Reactivity

Human, Mouse

Background

This gene encodes an enzyme that converts the pancreatic proenzyme trypsinogen to trypsin, which activates other proenzymes including chymotrypsinogen and procarboxypeptidases. The precursor protein is cleaved into two chains that form a heterodimer linked by a disulfide bond. This protein is a member of the trypsin family of peptidases. Mutations in this gene cause enterokinase deficiency, a malabsorption disorder characterized by diarrhea and failure to thrive.

Recommended Dilutions

WB 1:1000 - 1:2000

Immunogen Information

Gene ID

5651

Swiss Prot

P98073

Immunogen

Recombinant fusion protein containing a sequence corresponding to amino acids 40-300 of human TMPRSS15 (NP_002763.2).

Synonyms

ENTK; PRSS7; TMPRSS15

Contact



www.abclonal.com

Product Information

Source

Rabbit

Isotype

IgG

Purification

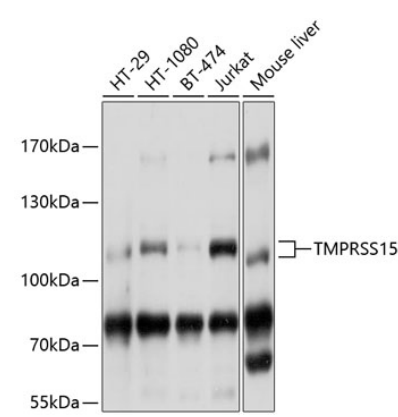
Affinity purification

Storage

Store at -20°C. Avoid freeze / thaw cycles.

Buffer: PBS with 0.02% sodium azide, 50% glycerol, pH 7.3.

Validation Data



Western blot analysis of various lysates using TMPRSS15 Rabbit pAb (A10239) at 1:1000 dilution.
Secondary antibody: HRP Goat Anti-Rabbit IgG (H+L) (AS014) at 1:10000 dilution.
Lysates/proteins: 25µg per lane.
Blocking buffer: 3% nonfat dry milk in TBST.
Detection: ECL Basic Kit (RM00020).
Exposure time: 1s.