

A10233

Leader in Biomolecular Solutions for Life Science



## PBX2 Rabbit pAb

Catalog No.: A10233

### Basic Information

**Observed MW**

55kDa

**Calculated MW**

46kDa

**Category**

Polyclonal Antibody

**Applications**

WB, ELISA

**Cross-Reactivity**

Mouse, Rat

### Background

This gene encodes a ubiquitously expressed member of the TALE/PBX homeobox family. It was identified by its similarity to a homeobox gene which is involved in t(1;19) translocation in acute pre-B-cell leukemias. This protein is a transcriptional activator which binds to the TLX1 promoter. The gene is located within the major histocompatibility complex (MHC) on chromosome 6.

### Recommended Dilutions

WB 1:500 - 1:2000

### Immunogen Information

**Gene ID**

5089

**Swiss Prot**

P40425

**Immunogen**

Recombinant fusion protein containing a sequence corresponding to amino acids 321-430 of human PBX2 (NP\_002577.2).

**Synonyms**

G17; HOX12; PBX2MHC; PBX2

### Contact



[www.abclonal.com](http://www.abclonal.com)

### Product Information

**Source**

Rabbit

**Isotype**

IgG

**Purification**

Affinity purification

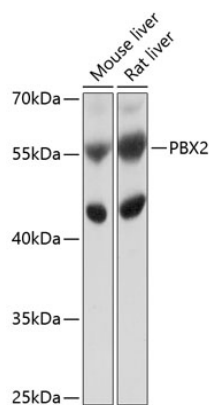
**Storage**

Store at -20°C. Avoid freeze / thaw cycles.

Buffer: PBS with 0.02% sodium azide, 50% glycerol, pH 7.3.

## Validation Data

---



Western blot analysis of various lysates using PBX2 Rabbit pAb (A10233) at 1:1000 dilution.  
Secondary antibody: HRP Goat Anti-Rabbit IgG (H+L) (A5014) at 1:10000 dilution.  
Lysates/proteins: 25µg per lane.  
Blocking buffer: 3% nonfat dry milk in TBST.  
Detection: ECL Basic Kit (RM00020).  
Exposure time: 5s.