

A10229

Leader in Biomolecular Solutions for Life Science



CHST6 Rabbit pAb

Catalog No.: A10229

Basic Information

Observed MW

44kDa

Calculated MW

44kDa

Category

Polyclonal Antibody

Applications

WB, ELISA

Cross-Reactivity

Human, Mouse, Rat

Background

The protein encoded by this gene is an enzyme that catalyzes the transfer of a sulfate group to the GlcNAc residues of keratan. Keratan sulfate helps maintain corneal transparency. Defects in this gene are a cause of macular corneal dystrophy (MCD).

Recommended Dilutions

WB 1:500 - 1:2000

Immunogen Information

Gene ID

4166

Swiss Prot

Q9GZX3

Immunogen

Recombinant fusion protein containing a sequence corresponding to amino acids 196-395 of human CHST6 (NP_067628.1).

Synonyms

MCDC1; gn6st-5; hCGn6ST; GST4-beta; C-GlcNAc6ST; glcNAc6ST-5; CHST6

Contact



www.abclonal.com

Product Information

Source

Rabbit

Isotype

IgG

Purification

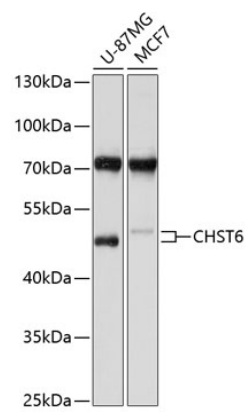
Affinity purification

Storage

Store at -20°C. Avoid freeze / thaw cycles.

Buffer: PBS with 0.02% sodium azide, 50% glycerol, pH 7.3.

Validation Data



Western blot analysis of various lysates using CHST6 Rabbit pAb (A10229) at 1:1000 dilution.
Secondary antibody: HRP Goat Anti-Rabbit IgG (H+L) (AS014) at 1:10000 dilution.
Lysates/proteins: 25µg per lane.
Blocking buffer: 3% nonfat dry milk in TBST.
Detection: ECL Basic Kit (RM00020).
Exposure time: 10s.