

A10225

Leader in Biomolecular Solutions for Life Science



LY6E Rabbit pAb

Catalog No.: A10225

1 Publications

Basic Information

Observed MW

14kDa

Calculated MW

14kDa

Category

Polyclonal Antibody

Applications

WB,IF/ICC,ELISA

Cross-Reactivity

Mouse,Rat

Background

This gene belongs to the human Ly6 gene family and encodes a glycosylphosphatidylinositol (GPI)-anchored cell surface protein. The protein plays an important role in T cell physiology, oncogenesis and immunological regulation. The protein is also involved in modulation of viral infection by coronaviruses, SARS-CoV, MERS-CoV and SARS-CoV-2.

Recommended Dilutions

WB	1:500 - 1:1000
IF/ICC	1:50 - 1:200

Immunogen Information

Gene ID

4061

Swiss Prot

Q16553

Immunogen

Recombinant fusion protein containing a sequence corresponding to amino acids 21-101 of human LY6E (NP_002337.1).

Synonyms

RIGE; SCA2; RIG-E; SCA-2; TSA-1; LY6E

Contact



www.abclonal.com

Product Information

Source

Rabbit

Isotype

IgG

Purification

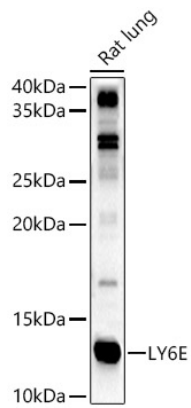
Affinity purification

Storage

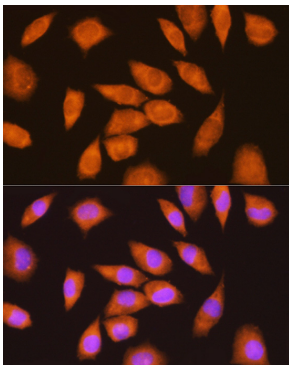
Store at -20°C. Avoid freeze / thaw cycles.

Buffer: PBS with 0.02% sodium azide,50% glycerol,pH7.3.

Validation Data



Western blot analysis of Rat lung, using LY6E antibody (A10225) at 1:1000 dilution.
Secondary antibody: HRP Goat Anti-Rabbit IgG (H+L) (A5014) at 1:10000 dilution.
Lysates/proteins: 25µg per lane.
Blocking buffer: 3% nonfat dry milk in TBST.
Detection: ECL Basic Kit (RM00020).
Exposure time: 90s.



Immunofluorescence analysis of L929 cells using LY6E Rabbit pAb (A10225) at dilution of 1:100 (40x lens). Blue: DAPI for nuclear staining.