

Cytokeratin 18 (KRT18) Rabbit pAb

Catalog No.: A1022 **4 Publications**

Basic Information

Observed MW

46kDa

Calculated MW

48kDa

Category

Primary antibody

Applications

ELISA, WB, IHC-P, IF/ICC

Cross-Reactivity

Human, Mouse, Rat

Background

KRT18 encodes the type I intermediate filament chain keratin 18. Keratin 18, together with its filament partner keratin 8, are perhaps the most commonly found members of the intermediate filament gene family. They are expressed in single layer epithelial tissues of the body. Mutations in this gene have been linked to cryptogenic cirrhosis. Two transcript variants encoding the same protein have been found for this gene.

Recommended Dilutions

WB	1:1000 - 1:5000
IHC-P	1:50 - 1:100
IF/ICC	1:100 - 1:500

Immunogen Information

Gene ID

3875

Swiss Prot

P05783

Immunogen

Recombinant fusion protein containing a sequence corresponding to amino acids 127-430 of human Cytokeratin 18 (KRT18) (NP_000215.1).

Synonyms

K18; CK-18; CYK18; Cytokeratin 18 (KRT18)

Contact

 | www.abclonal.com

Product Information

Source

Rabbit

Isotype

IgG

Purification

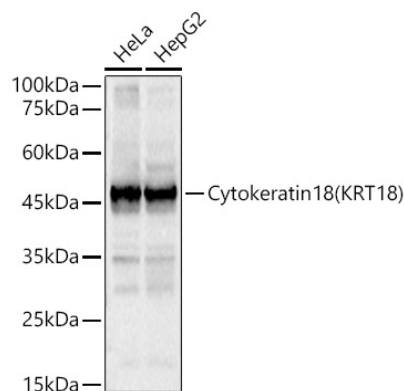
Affinity purification

Storage

Store at -20°C. Avoid freeze / thaw cycles.

Buffer: PBS with 0.01% thimerosal, 50% glycerol, pH7.3.

Validation Data



Western blot analysis of various lysates, using Cytokeratin 18 (KRT18) Rabbit pAb (A1022) at 1:3000 dilution.

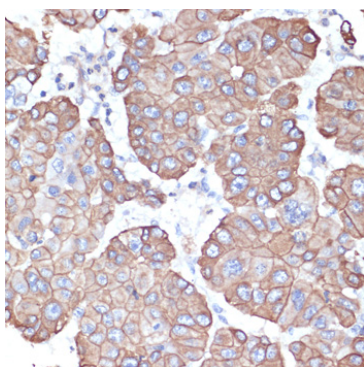
Secondary antibody: HRP Goat Anti-Rabbit IgG (H+L) (A5014) at 1:10000 dilution.

Lysates/proteins: 25µg per lane.

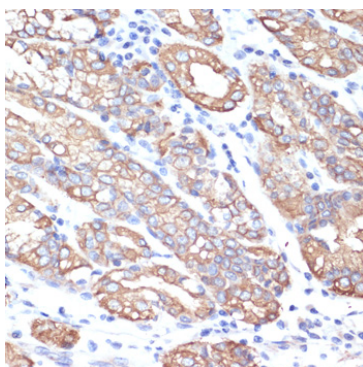
Blocking buffer: 3% nonfat dry milk in TBST.

Detection: ECL Basic Kit (RM00020).

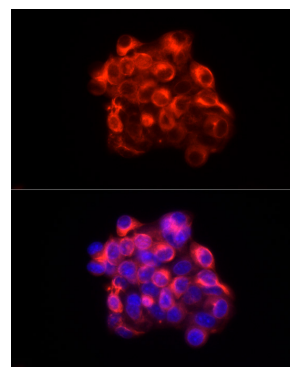
Exposure time: 0.5s.



Immunohistochemistry analysis of Cytokeratin 18 (KRT18) in paraffin-embedded human liver cancer using Cytokeratin 18 (KRT18) Rabbit pAb (A1022) at dilution of 1:100 (40x lens). Perform microwave antigen retrieval with 10 mM PBS buffer pH 7.2 before commencing with IHC staining protocol.



Immunohistochemistry analysis of Cytokeratin 18 (KRT18) in paraffin-embedded human small intestine using Cytokeratin 18 (KRT18) Rabbit pAb (A1022) at dilution of 1:100 (40x lens). Perform microwave antigen retrieval with 10 mM PBS buffer pH 7.2 before commencing with IHC staining protocol.



Immunofluorescence analysis of HepG2 cells using Cytokeratin 18 (KRT18) Rabbit pAb (A1022) at dilution of 1:300 (40x lens). Secondary antibody: Cy3 Goat Anti-Rabbit IgG (H+L) (A5007) at 1:500 dilution. Blue: DAPI for nuclear staining.