

A10215

Leader in Biomolecular Solutions for Life Science



EVPL Rabbit pAb

Catalog No.: A10215

Basic Information

Observed MW

270kDa

Calculated MW

232kDa

Category

Mouse Monoclonal Antibody

Applications

WB, ELISA

Cross-Reactivity

Human, Mouse, Rat

Background

This gene encodes a member of the plakin family of proteins that forms a component of desmosomes and the epidermal cornified envelope. This gene is located in the tylosis oesophageal cancer locus on chromosome 17q25, and its deletion is associated with both familial and sporadic forms of oesophageal squamous cell carcinoma. Patients suffering from the autoimmune mucocutaneous disorder, paraneoplastic pemphigus, develop antibodies against the encoded protein.

Recommended Dilutions

WB 1:500 - 1:2000

Immunogen Information

Gene ID

2125

Swiss Prot

Q92817

Immunogen

Recombinant fusion protein containing a sequence corresponding to amino acids 1784-2033 of human EVPL (NP_001979.2).

Synonyms

EVPK; EVPL

Contact



www.abclonal.com

Product Information

Source

Rabbit

Isotype

IgG

Purification

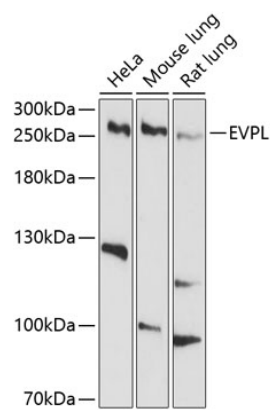
Affinity purification

Storage

Store at -20°C. Avoid freeze / thaw cycles.

Buffer: PBS with 0.02% sodium azide, 50% glycerol, pH 7.3.

Validation Data



Western blot analysis of extracts of various cell lines, using EVPL antibody (A10215) at 1:1000 dilution.
Secondary antibody: HRP Goat Anti-Rabbit IgG (H+L) (A5014) at 1:10000 dilution.
Lysates/proteins: 25µg per lane.
Blocking buffer: 3% nonfat dry milk in TBST.
Detection: ECL Basic Kit (RM00020).
Exposure time: 90s.