

A10210

Leader in Biomolecular Solutions for Life Science



## DPP6 Rabbit pAb

Catalog No.: A10210

### Basic Information

**Observed MW**

105kDa

**Calculated MW**

98kDa

**Category**

Polyclonal Antibody

**Applications**

WB, ELISA

**Cross-Reactivity**

Human

### Background

This gene encodes a single-pass type II membrane protein that is a member of the peptidase S9B family of serine proteases. This protein has no detectable protease activity, most likely due to the absence of the conserved serine residue normally present in the catalytic domain of serine proteases. However, it does bind specific voltage-gated potassium channels and alters their expression and biophysical properties. Variations in this gene may be associated with susceptibility to amyotrophic lateral sclerosis and with idiopathic ventricular fibrillation. Alternative splicing results in multiple transcript variants.

### Recommended Dilutions

WB 1:1000 - 1:2000

### Immunogen Information

**Gene ID**

1804

**Swiss Prot**

P42658

**Immunogen**

Recombinant fusion protein containing a sequence corresponding to amino acids 117-210 of human DPP6 (NP\_001277182.1).

**Synonyms**

VF2; DPL1; DPPX; MRD33; DPP6

### Contact



[www.abclonal.com](http://www.abclonal.com)

### Product Information

**Source**

Rabbit

**Isotype**

IgG

**Purification**

Affinity purification

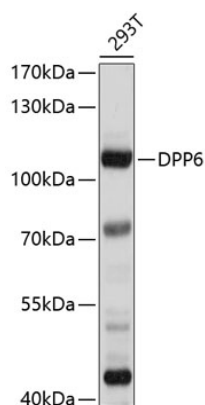
**Storage**

Store at -20°C. Avoid freeze / thaw cycles.

Buffer: PBS with 0.02% sodium azide, 50% glycerol, pH 7.3.

## Validation Data

---



Western blot analysis of extracts of 293T cells, using DPP6 antibody (A10210) at 1:1000 dilution.  
Secondary antibody: HRP Goat Anti-Rabbit IgG (H+L) (AS014) at 1:10000 dilution.  
Lysates/proteins: 25µg per lane.  
Blocking buffer: 3% nonfat dry milk in TBST.  
Detection: ECL Basic Kit (RM00020).  
Exposure time: 10s.