

# DIAPH2 Rabbit pAb

Catalog No.: A10209

## Basic Information

### Observed MW

125kDa

### Calculated MW

126kDa

### Category

Primary antibody

### Applications

ELISA, WB

### Cross-Reactivity

Human, Mouse, Rat

## Background

The product of this gene belongs to the diaphanous subfamily of the formin homology family of proteins. This gene may play a role in the development and normal function of the ovaries. Defects in this gene have been linked to premature ovarian failure 2. Alternatively spliced transcript variants encoding different isoforms have been identified.

## Recommended Dilutions

WB 1:1000 - 1:2000

## Immunogen Information

### Gene ID

1730

### Swiss Prot

O60879

### Immunogen

Recombinant fusion protein containing a sequence corresponding to amino acids 1-120 of human DIAPH2 (NP\_009293.1).

### Synonyms

DIA; POF; DIA2; DRF2; POF2; POF2A; DIAPH2

## Contact

 | [www.abclonal.com](http://www.abclonal.com)

## Product Information

### Source

Rabbit

### Isotype

IgG

### Purification

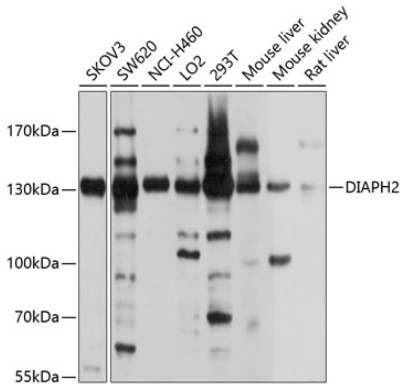
Affinity purification

### Storage

Store at -20°C. Avoid freeze / thaw cycles.

Buffer: PBS with 0.02% sodium azide, 50% glycerol, pH 7.3.

# Validation Data



Western blot analysis of extracts of various cell lines, using DIAPH2 antibody (A10209) at 1:1000 dilution.  
Secondary antibody: HRP Goat Anti-Rabbit IgG (H+L) (A5014) at 1:10000 dilution.  
Lysates/proteins: 25µg per lane.  
Blocking buffer: 3% nonfat dry milk in TBST.  
Detection: ECL Basic Kit (RM00020).  
Exposure time: 15s.