

A10201

Leader in Biomolecular Solutions for Life Science



## RBBP8 Rabbit pAb

Catalog No.: A10201

2 Publications

### Basic Information

#### Observed MW

110kDa

#### Calculated MW

102kDa

#### Category

Polyclonal Antibody

#### Applications

WB, ELISA

#### Cross-Reactivity

Rat

### Background

The protein encoded by this gene is a ubiquitously expressed nuclear protein. It is found among several proteins that bind directly to retinoblastoma protein, which regulates cell proliferation. This protein complexes with transcriptional co-repressor CTBP. It is also associated with BRCA1 and is thought to modulate the functions of BRCA1 in transcriptional regulation, DNA repair, and/or cell cycle checkpoint control. It is suggested that this gene may itself be a tumor suppressor acting in the same pathway as BRCA1. Three transcript variants encoding two different isoforms have been found for this gene. More transcript variants exist, but their full-length natures have not been determined.

### Recommended Dilutions

WB 1:500 - 1:1000

### Immunogen Information

#### Gene ID

5932

#### Swiss Prot

Q99708

#### Immunogen

Recombinant fusion protein containing a sequence corresponding to amino acids 648-897 of human RBBP8 (NP\_002885.1).

#### Synonyms

RIM; COM1; CTIP; JWDS; SAE2; JAWAD; SCKL2; RBBP8

### Contact



[www.abclonal.com](http://www.abclonal.com)

### Product Information

#### Source

Rabbit

#### Isotype

IgG

#### Purification

Affinity purification

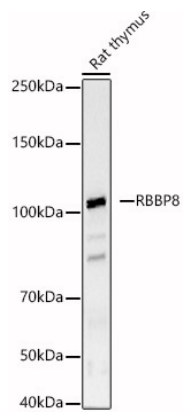
#### Storage

Store at -20°C. Avoid freeze / thaw cycles.

Buffer: PBS with 0.01% thimerosal, 50% glycerol, pH 7.3.

## Validation Data

---



Western blot analysis of Rat thymus, using RBBP8 antibody (A10201) at 1:1000 dilution.  
Secondary antibody: HRP Goat Anti-Rabbit IgG (H+L) (A5014) at 1:10000 dilution.  
Lysates/proteins: 25µg per lane.  
Blocking buffer: 3% nonfat dry milk in TBST.  
Detection: ECL Basic Kit (RM00020).  
Exposure time: 30s.