

A10200

Leader in Biomolecular Solutions for Life Science



PODXL Rabbit pAb

Catalog No.: A10200

2 Publications

Basic Information

Observed MW

95kDa

Calculated MW

59kDa

Category

Polyclonal Antibody

Applications

WB, ELISA

Cross-Reactivity

Human, Mouse

Background

This gene encodes a member of the sialomucin protein family. The encoded protein was originally identified as an important component of glomerular podocytes. Podocytes are highly differentiated epithelial cells with interdigitating foot processes covering the outer aspect of the glomerular basement membrane. Other biological activities of the encoded protein include: binding in a membrane protein complex with Na⁺/H⁺ exchanger regulatory factor to intracellular cytoskeletal elements, playing a role in hematopoietic cell differentiation, and being expressed in vascular endothelium cells and binding to L-selectin.

Recommended Dilutions

WB 1:1000 - 1:2000

Immunogen Information

Gene ID

5420

Swiss Prot

O00592

Immunogen

Recombinant fusion protein containing a sequence corresponding to amino acids 287-526 of human PODXL (NP_005388.2).

Synonyms

PC; PDX; PCLP; Gp200; gp135; PCLP-1; PODXL1; PODXL

Contact



www.abclonal.com

Product Information

Source

Rabbit

Isotype

IgG

Purification

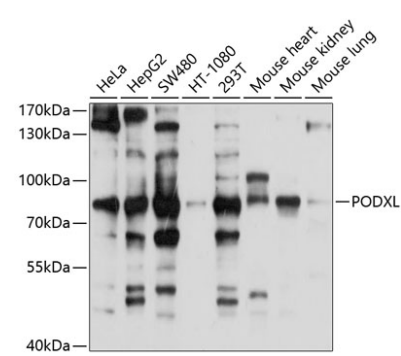
Affinity purification

Storage

Store at -20°C. Avoid freeze / thaw cycles.

Buffer: PBS with 0.02% sodium azide, 50% glycerol, pH 7.3.

Validation Data



Western blot analysis of various lysates using PODXL Rabbit pAb (A10200) at 1:1000 dilution.
Secondary antibody: HRP Goat Anti-Rabbit IgG (H+L) (AS014) at 1:10000 dilution.
Lysates/proteins: 25µg per lane.
Blocking buffer: 3% nonfat dry milk in TBST.
Detection: ECL Basic Kit (RM00020).
Exposure time: 3s.