

A10195

Leader in Biomolecular Solutions for Life Science



## IGFBP6 Rabbit pAb

Catalog No.: A10195

1 Publications

### Basic Information

**Observed MW**

25kDa

**Calculated MW**

25kDa

**Category**

Polyclonal Antibody

**Applications**

WB, ELISA

**Cross-Reactivity**

Human, Mouse

### Background

Enables identical protein binding activity and insulin-like growth factor II binding activity. Involved in cell migration and positive regulation of stress-activated MAPK cascade. Part of insulin-like growth factor binary complex. Implicated in obesity. Biomarker of breast cancer; in situ carcinoma; leiomyoma; and neovascular inflammatory vitreoretinopathy.

### Recommended Dilutions

WB 1:1000 - 1:3000

### Immunogen Information

**Gene ID**

3489

**Swiss Prot**

P24592

**Immunogen**

Recombinant fusion protein containing a sequence corresponding to amino acids 28-240 of human IGFBP6 (NP\_002169.1).

**Synonyms**

IBP6; IGFBP6

### Contact



[www.abclonal.com](http://www.abclonal.com)

### Product Information

**Source**

Rabbit

**Isotype**

IgG

**Purification**

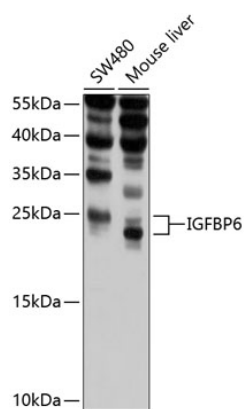
Affinity purification

**Storage**

Store at -20°C. Avoid freeze / thaw cycles.

Buffer: PBS with 0.02% sodium azide, 50% glycerol, pH 7.3.

## Validation Data



Western blot analysis of various lysates using IGFBP6 Rabbit pAb (A10195) at 1:1000 dilution.  
Secondary antibody: HRP Goat Anti-Rabbit IgG (H+L) (A5014) at 1:10000 dilution.  
Lysates/proteins: 25µg per lane.  
Blocking buffer: 3% nonfat dry milk in TBST.  
Detection: ECL Basic Kit (RM00020).  
Exposure time: 15s.