

A10189

Leader in Biomolecular Solutions for Life Science



## MAP3K13 Rabbit pAb

Catalog No.: A10189

### Basic Information

**Observed MW**

108kDa

**Calculated MW**

108kDa

**Category**

Mouse Monoclonal Antibody

**Applications**

WB, ELISA

**Cross-Reactivity**

Human, Mouse

### Background

The protein encoded by this gene is a member of serine/threonine protein kinase family. This kinase contains a dual leucine-zipper motif, and has been shown to form dimers/oligomers through its leucine-zipper motif. This kinase can phosphorylate and activate MAPK8/JNK, MAP2K7/MKK7, which suggests a role in the JNK signaling pathway.

### Recommended Dilutions

WB 1:1000 - 1:3000

### Immunogen Information

**Gene ID**

9175

**Swiss Prot**

O43283

**Immunogen**

Recombinant fusion protein containing a sequence corresponding to amino acids 500-759 of human MAP3K13 (NP\_001229246.1).

**Synonyms**

LZK; MLK; MEKK13; MAP3K13

### Contact



[www.abclonal.com](http://www.abclonal.com)

### Product Information

**Source**

Rabbit

**Isotype**

IgG

**Purification**

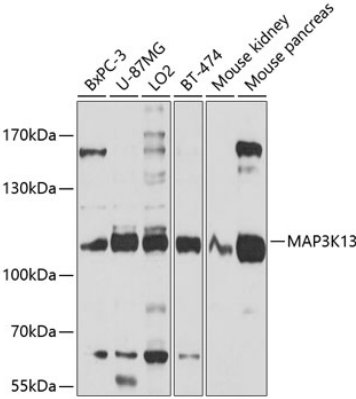
Affinity purification

**Storage**

Store at -20°C. Avoid freeze / thaw cycles.

Buffer: PBS with 0.02% sodium azide, 50% glycerol, pH7.3.

Validation Data



Western blot analysis of various lysates using MAP3K13 Rabbit pAb (A10189) at 1:1000 dilution.  
Secondary antibody: HRP Goat Anti-Rabbit IgG (H+L) (AS014) at 1:10000 dilution.  
Lysates/proteins: 25µg per lane.  
Blocking buffer: 3% nonfat dry milk in TBST.  
Detection: ECL Basic Kit (RM00020).  
Exposure time: 10s.