

PPP1R3A Rabbit pAb

Catalog No.: A10171

Basic Information

Observed MW

150kDa

Calculated MW

126kDa

Category

Primary antibody

Applications

ELISA, WB

Cross-Reactivity

Mouse

Background

The glycogen-associated form of protein phosphatase-1 (PP1) derived from skeletal muscle is a heterodimer composed of a 37-kD catalytic subunit and a 124-kD targeting and regulatory subunit. This gene encodes the regulatory subunit which binds to muscle glycogen with high affinity, thereby enhancing dephosphorylation of glycogen-bound substrates for PP1 such as glycogen synthase and glycogen phosphorylase kinase.

Recommended Dilutions

WB 1:500 - 1:2000

Immunogen Information

Gene ID

5506

Swiss Prot

Q16821

Immunogen

Recombinant fusion protein containing a sequence corresponding to amino acids 900-1080 of human PPP1R3A (NP_002702.2).

Synonyms

GM; PP1G; PPP1R3; PPP1R3A

Contact

 | www.abclonal.com

Product Information

Source

Rabbit

Isotype

IgG

Purification

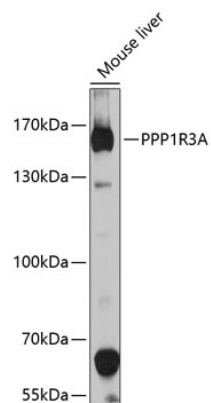
Affinity purification

Storage

Store at -20°C. Avoid freeze / thaw cycles.

Buffer: PBS with 0.02% sodium azide, 50% glycerol, pH7.3.

Validation Data



Western blot analysis of extracts of mouse liver, using PPP1R3A antibody (A10171) at 1:1000 dilution.
Secondary antibody: HRP Goat Anti-Rabbit IgG (H+L) (A5014) at 1:10000 dilution.
Lysates/proteins: 25µg per lane.
Blocking buffer: 3% nonfat dry milk in TBST.
Detection: ECL Basic Kit (RM00020).
Exposure time: 90s.