

A10170

Leader in Biomolecular Solutions for Life Science



## C6 Rabbit pAb

Catalog No.: A10170

### Basic Information

**Observed MW**

105-130kDa

**Calculated MW**

105kDa

**Category**

Polyclonal Antibody

**Applications**

WB, ELISA

**Cross-Reactivity**

Mouse, Rat

### Background

This gene encodes a component of the complement cascade. The encoded protein is part of the membrane attack complex that can be incorporated into the cell membrane and cause cell lysis. Mutations in this gene are associated with complement component-6 deficiency. Transcript variants encoding the same protein have been described.

### Recommended Dilutions

WB 1:500 - 1:1000

### Immunogen Information

**Gene ID**

729

**Swiss Prot**

P13671

**Immunogen**

Recombinant fusion protein containing a sequence corresponding to amino acids 586-934 of human C6 (NP\_000056.2).

**Synonyms**

C6

### Contact



[www.abclonal.com](http://www.abclonal.com)

### Product Information

**Source**

Rabbit

**Isotype**

IgG

**Purification**

Affinity purification

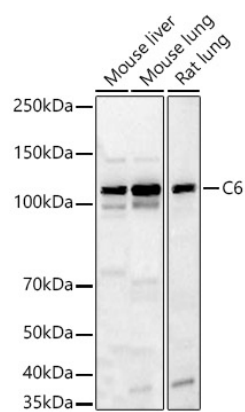
**Storage**

Store at -20°C. Avoid freeze / thaw cycles.

Buffer: PBS with 0.02% sodium azide, 50% glycerol, pH 7.3.

## Validation Data

---



Western blot analysis of various lysates, using C6 Rabbit pAb (A10170) at 1:1000 dilution.  
Secondary antibody: HRP Goat Anti-Rabbit IgG (H+L) (A5014) at 1:10000 dilution.  
Lysates/proteins: 25µg per lane.  
Blocking buffer: 3% nonfat dry milk in TBST.  
Detection: ECL Basic Kit (RM00020).  
Exposure time: 180s.