

A10159

Leader in Biomolecular Solutions for Life Science



BAGE2 Rabbit pAb

Catalog No.: A10159

Basic Information

Observed MW

12kDa

Calculated MW

12kDa

Category

Polyclonal Antibody

Applications

WB, ELISA

Cross-Reactivity

Human

Background

Predicted to be located in extracellular region.

Recommended Dilutions

WB 1:500 - 1:2000

Immunogen Information

Gene ID

85319

Swiss Prot

Q86Y30

Immunogen

Recombinant fusion protein containing a sequence corresponding to amino acids 18-109 of human BAGE2 (NP_872288.2).

Synonyms

CT2.2; BAGE2

Contact



www.abclonal.com

Product Information

Source

Rabbit

Isotype

IgG

Purification

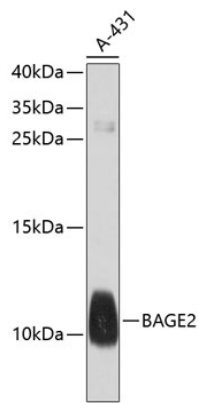
Affinity purification

Storage

Store at -20°C. Avoid freeze / thaw cycles.

Buffer: PBS with 0.02% sodium azide, 50% glycerol, pH7.3.

Validation Data



Western blot analysis of lysates from A-431 cells, using BAGE2 Rabbit pAb (A10159) at 1:1000 dilution.
Secondary antibody: HRP Goat Anti-Rabbit IgG (H+L) (A5014) at 1:10000 dilution.
Lysates/proteins: 25µg per lane.
Blocking buffer: 3% nonfat dry milk in TBST.
Detection: ECL Basic Kit (RM00020).
Exposure time: 90s.