

A10158

Leader in Biomolecular Solutions for Life Science



## GFM2 Rabbit pAb

Catalog No.: A10158

### Basic Information

#### Observed MW

86kDa

#### Calculated MW

87kDa

#### Category

Mouse Monoclonal Antibody

#### Applications

WB, ELISA

#### Cross-Reactivity

Human, Mouse, Rat

### Background

Eukaryotes contain two protein translational systems, one in the cytoplasm and one in the mitochondria. Mitochondrial translation is crucial for maintaining mitochondrial function and mutations in this system lead to a breakdown in the respiratory chain-oxidative phosphorylation system and to impaired maintenance of mitochondrial DNA. This gene encodes one of the mitochondrial translation elongation factors, which is a GTPase that plays a role at the termination of mitochondrial translation by mediating the disassembly of ribosomes from messenger RNA. Its role in the regulation of normal mitochondrial function and in disease states attributed to mitochondrial dysfunction is not known. Alternative splicing results in multiple transcript variants encoding distinct isoforms.

### Recommended Dilutions

WB 1:1000 - 1:4000

### Immunogen Information

#### Gene ID

84340

#### Swiss Prot

Q969S9

#### Immunogen

Recombinant fusion protein containing a sequence corresponding to amino acids 520-779 of human GFM2 (NP\_115756.2).

#### Synonyms

RRF; EFG2; RRF2; MRRF2; hEFG2; MST027; RRF2mt; EF-G2mt; MSTP027; mEF-G 2; GFM2

### Contact



[www.abclonal.com](http://www.abclonal.com)

### Product Information

#### Source

Rabbit

#### Isotype

IgG

#### Purification

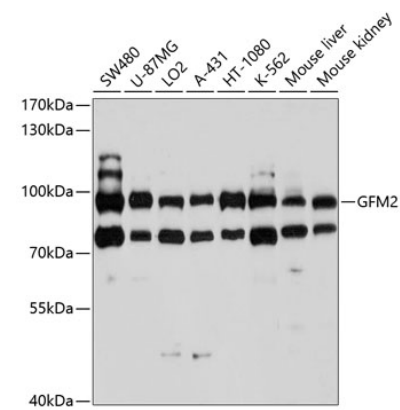
Affinity purification

#### Storage

Store at -20°C. Avoid freeze / thaw cycles.

Buffer: PBS with 0.02% sodium azide, 50% glycerol, pH 7.3.

# Validation Data



Western blot analysis of various lysates using GFM2 Rabbit pAb (A10158) at 1:1000 dilution.  
Secondary antibody: HRP Goat Anti-Rabbit IgG (H+L) (AS014) at 1:10000 dilution.  
Lysates/proteins: 25µg per lane.  
Blocking buffer: 3% nonfat dry milk in TBST.  
Detection: ECL Basic Kit (RM00020).  
Exposure time: 10s.