

A10155

Leader in Biomolecular Solutions for Life Science



DUSP16 Rabbit pAb

Catalog No.: A10155

1 Publications

Basic Information

Observed MW

75kDa

Calculated MW

73kDa

Category

Polyclonal Antibody

Applications

WB, ELISA

Cross-Reactivity

Human, Mouse, Rat

Background

This gene encodes a mitogen-activated protein kinase phosphatase that is a member of the dual specificity protein phosphatase subfamily. These phosphatases inactivate their target kinases by dephosphorylating both the phosphoserine/threonine and phosphotyrosine residues. The encoded protein specifically regulates the c-Jun amino-terminal kinase (JNK) and extracellular signal-regulated kinase (ERK) pathways.

Recommended Dilutions

WB 1:500 - 1:1000

Immunogen Information

Gene ID

80824

Swiss Prot

Q9BY84

Immunogen

Recombinant fusion protein containing a sequence corresponding to amino acids 416-665 of human DUSP16 (NP_085143.1).

Synonyms

MKP7; MKP-7; DUSP16

Contact



www.abclonal.com

Product Information

Source

Rabbit

Isotype

IgG

Purification

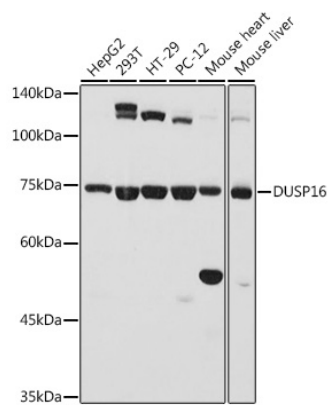
Affinity purification

Storage

Store at -20°C. Avoid freeze / thaw cycles.

Buffer: PBS with 0.02% sodium azide, 50% glycerol, pH 7.3.

Validation Data



Western blot analysis of extracts of various cell lines, using DUSP16 antibody (A10155) at 1:1000 dilution.
Secondary antibody: HRP Goat Anti-Rabbit IgG (H+L) (A5014) at 1:10000 dilution.
Lysates/proteins: 25µg per lane.
Blocking buffer: 3% nonfat dry milk in TBST.
Detection: ECL Basic Kit (RM00020).
Exposure time: 10s.