

A10154

Leader in Biomolecular Solutions for Life Science



C6orf25 Rabbit pAb

Catalog No.: A10154

Basic Information

Observed MW

26kDa

Calculated MW

26kDa

Category

Mouse Monoclonal Antibody

Applications

WB, ELISA

Cross-Reactivity

Human, Mouse, Rat

Background

This gene is a member of the immunoglobulin (Ig) superfamily and is located in the major histocompatibility complex (MHC) class III region. The protein encoded by this gene is a glycosylated, plasma membrane-bound cell surface receptor, but soluble isoforms encoded by some transcript variants have been found in the endoplasmic reticulum and Golgi before being secreted. Multiple transcript variants encoding different isoforms have been found for this gene.

Recommended Dilutions

WB 1:200 - 1:1000

Immunogen Information

Gene ID

80739

Swiss Prot

O95866

Immunogen

Recombinant fusion protein containing a sequence corresponding to amino acids 18-142 of human C6orf25 (NP_612121.1).

Synonyms

G6b; NG31; G6b-B; THAMY; C6orf25

Contact



www.abclonal.com

Product Information

Source

Rabbit

Isotype

IgG

Purification

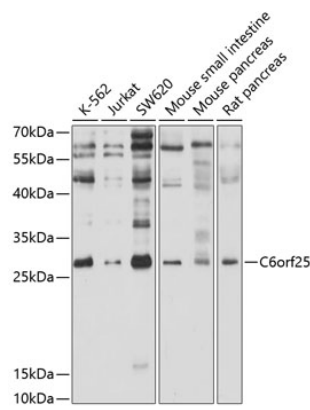
Affinity purification

Storage

Store at -20°C. Avoid freeze / thaw cycles.

Buffer: PBS with 0.02% sodium azide, 50% glycerol, pH 7.3.

Validation Data



Western blot analysis of extracts of various cell lines, using C6orf25 antibody (A10154) at 1:1000 dilution.
Secondary antibody: HRP Goat Anti-Rabbit IgG (H+L) (A5014) at 1:10000 dilution.
Lysates/proteins: 25µg per lane.
Blocking buffer: 3% nonfat dry milk in TBST.
Detection: ECL Enhanced Kit (RM00021).
Exposure time: 30s.