

A1014

Leader in Biomolecular Solutions for Life Science



Casein Kinase 2 alpha (CSNK2A1) Rabbit pAb

Catalog No.: A1014

2 Publications

Basic Information

Observed MW

41kDa

Calculated MW

45kDa

Category

Antibody

Applications

WB, ELISA

Cross-Reactivity

Human, Mouse, Rat

Background

Casein kinase II is a serine/threonine protein kinase that phosphorylates acidic proteins such as casein. It is involved in various cellular processes, including cell cycle control, apoptosis, and circadian rhythm. The kinase exists as a tetramer and is composed of an alpha, an alpha-prime, and two beta subunits. The alpha subunits contain the catalytic activity while the beta subunits undergo autophosphorylation. The protein encoded by this gene represents the alpha subunit. Multiple transcript variants encoding different protein isoforms have been found for this gene.

Recommended Dilutions

WB 1:500 - 1:1000

Immunogen Information

Gene ID

1457

Swiss Prot

P68400

Immunogen

Recombinant Protein corresponding to a sequence within amino acids 1-391 of human Casein Kinase 2 alpha (CSNK2A1) (NP_001886.1).

Synonyms

CKII; Cka1; Cka2; CK2A1; OCNDS; Casein Kinase 2 alpha (CSNK2A1)

Contact



www.abclonal.com

Product Information

Source

Rabbit

Isotype

IgG

Purification

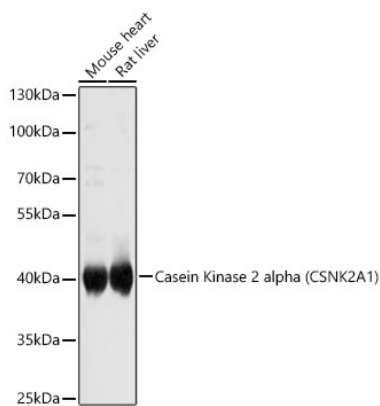
Affinity purification

Storage

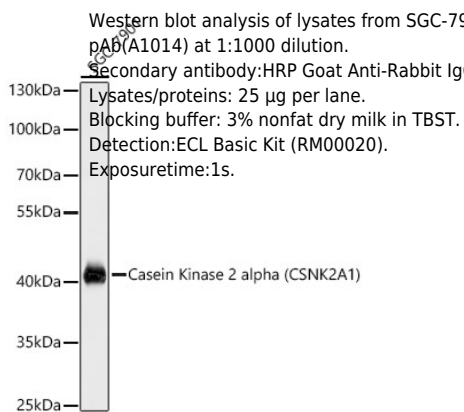
Store at -20°C. Avoid freeze / thaw cycles.

Buffer: PBS with 0.02% sodium azide, 50% glycerol, pH 7.3.

Validation Data



Western blot analysis of various lysates using Casein Kinase 2 alpha (CSNK2A1) Rabbit pAb (A1014) at 1:1000 dilution.
Secondary antibody: HRP Goat Anti-Rabbit IgG (H+L)(A5014) at 1:10000 dilution.
Lysates / proteins: 25 µg per lane.
Blocking buffer: 3 % nonfat dry milk in TBST.
Detection: ECL Basic Kit (RM00020).
Exposure time: 5s.



Western blot analysis of lysates from SGC-7901 cells using Casein Kinase 2 alpha (CSNK2A1) Rabbit pAb (A1014) at 1:1000 dilution.
Secondary antibody: HRP Goat Anti-Rabbit IgG (H+L)(A5014) at 1:10000 dilution.
Lysates/proteins: 25 µg per lane.
Blocking buffer: 3% nonfat dry milk in TBST.
Detection: ECL Basic Kit (RM00020).
Exposure time: 1s.