

A10127

Leader in Biomolecular Solutions for Life Science



IKBKAP Rabbit pAb

Catalog No.: A10127

Basic Information

Observed MW

150kDa

Calculated MW

150kDa

Category

Mouse Monoclonal Antibody

Applications

WB,IHC-P,ELISA

Cross-Reactivity

Human,Mouse,Rat

Background

The protein encoded by this gene is a scaffold protein and a regulator for three different kinases involved in proinflammatory signaling. The encoded protein can bind NF-kappa-B-inducing kinase and I-kappa-B kinases through separate domains and assemble them into an active kinase complex. Mutations in this gene have been associated with familial dysautonomia. Alternative splicing results in multiple transcript variants encoding different isoforms.

Recommended Dilutions

WB	1:1000 - 1:4000
IHC-P	1:50 - 1:200

Immunogen Information

Gene ID	Swiss Prot
8518	O95163

Immunogen

Recombinant fusion protein containing a sequence corresponding to amino acids 1093-1332 of human IKBKAP (NP_003631.2).

Synonyms

FD; DYS; IKAP; IKI3; TOT1; IKBKAP

Contact



www.abclonal.com

Product Information

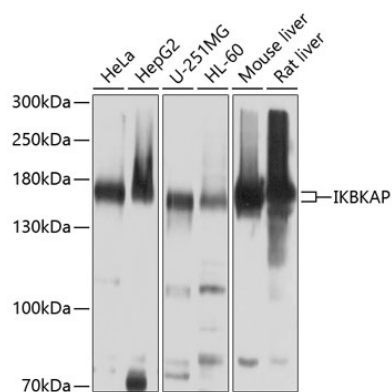
Source	Isotype	Purification
Rabbit	IgG	Affinity purification

Storage

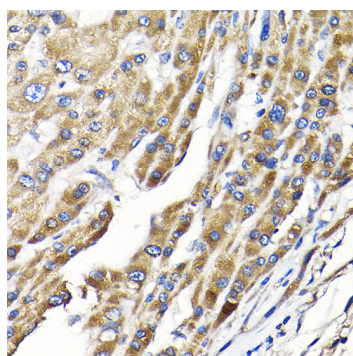
Store at -20°C. Avoid freeze / thaw cycles.

Buffer: PBS with 0.02% sodium azide,50% glycerol,pH7.3.

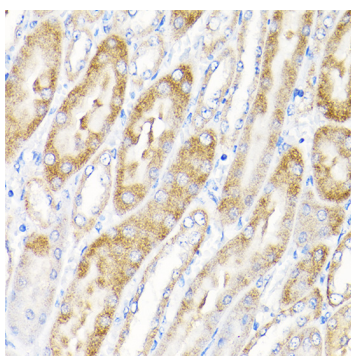
Validation Data



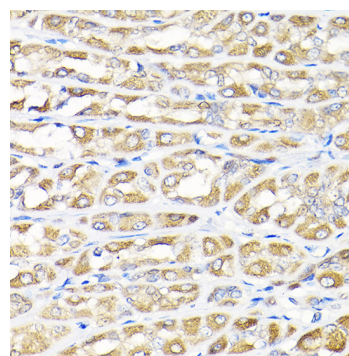
Western blot analysis of extracts of various cell lines, using IKBKAP antibody (A10127) at 1:1000 dilution. Secondary antibody: HRP Goat Anti-Rabbit IgG (H+L) (A5014) at 1:10000 dilution. Lysates/proteins: 25µg per lane. Blocking buffer: 3% nonfat dry milk in TBST. Detection: ECL Basic Kit (RM00020). Exposure time: 10s.



Immunohistochemistry analysis of paraffin-embedded human liver cancer using IKBKAP Rabbit pAb (A10127) at dilution of 1:100 (40x lens). Perform high pressure antigen retrieval with 10 mM citrate buffer pH 6.0 before commencing with IHC staining protocol.



Immunohistochemistry analysis of paraffin-embedded mouse kidney using IKBKAP Rabbit pAb (A10127) at dilution of 1:100 (40x lens). Perform high pressure antigen retrieval with 10 mM citrate buffer pH 6.0 before commencing with IHC staining protocol.



Immunohistochemistry analysis of paraffin-embedded rat stomach using IKBKAP Rabbit pAb (A10127) at dilution of 1:100 (40x lens). Perform high pressure antigen retrieval with 10 mM citrate buffer pH 6.0 before commencing with IHC staining protocol.