

A10116

Leader in Biomolecular Solutions for Life Science



## KEL Rabbit pAb

Catalog No.: A10116

### Basic Information

**Observed MW**

120kDa

**Calculated MW**

83kDa

**Category**

Mouse Monoclonal Antibody

**Applications**

WB, ELISA

**Cross-Reactivity**

Human

### Background

This gene encodes a type II transmembrane glycoprotein that is the highly polymorphic Kell blood group antigen. The Kell glycoprotein links via a single disulfide bond to the XK membrane protein that carries the Kx antigen. The encoded protein contains sequence and structural similarity to members of the neprilysin (M13) family of zinc endopeptidases.

### Recommended Dilutions

WB 1:200 - 1:1000

### Immunogen Information

**Gene ID**

3792

**Swiss Prot**

P23276

**Immunogen**

Recombinant fusion protein containing a sequence corresponding to amino acids 70-310 of human KEL (NP\_000411.1).

**Synonyms**

ECE3; Kell; CD238; KEL

### Contact



[www.abclonal.com](http://www.abclonal.com)

### Product Information

**Source**

Rabbit

**Isotype**

IgG

**Purification**

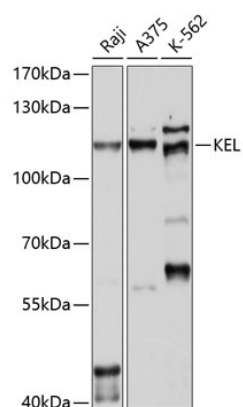
Affinity purification

**Storage**

Store at -20°C. Avoid freeze / thaw cycles.

Buffer: PBS with 0.02% sodium azide, 50% glycerol, pH 7.3.

## Validation Data



Western blot analysis of various lysates using KEL Rabbit pAb (A10116) at 1:1000 dilution.  
Secondary antibody: HRP Goat Anti-Rabbit IgG (H+L) (AS014) at 1:10000 dilution.  
Lysates/proteins: 25μg per lane.  
Blocking buffer: 3% nonfat dry milk in TBST.  
Detection: ECL Enhanced Kit (RM00021).  
Exposure time: 20s.