

A10112

Leader in Biomolecular Solutions for Life Science



## GJB1 Rabbit pAb

Catalog No.: A10112

2 Publications

### Basic Information

#### Observed MW

32kDa/36kDa

#### Calculated MW

32kDa

#### Category

Mouse Monoclonal Antibody

#### Applications

WB, ELISA

#### Cross-Reactivity

Human, Mouse, Rat

### Background

This gene encodes a member of the gap junction protein family. The gap junction proteins are membrane-spanning proteins that assemble to form gap junction channels that facilitate the transfer of ions and small molecules between cells. According to sequence similarities at the nucleotide and amino acid levels, the gap junction proteins are divided into two categories, alpha and beta. Mutations in this gene cause X-linked Charcot-Marie-Tooth disease, an inherited peripheral neuropathy. Alternatively spliced transcript variants encoding the same protein have been found for this gene.

### Recommended Dilutions

WB 1:200 - 1:1000

### Immunogen Information

#### Gene ID

2705

#### Swiss Prot

P08034

#### Immunogen

Recombinant fusion protein containing a sequence corresponding to amino acids 214-283 of human GJB1 (NP\_000157.1).

#### Synonyms

CMTX; CX32; CMTX1; GJB1

### Contact



[www.abclonal.com](http://www.abclonal.com)

### Product Information

#### Source

Rabbit

#### Isotype

IgG

#### Purification

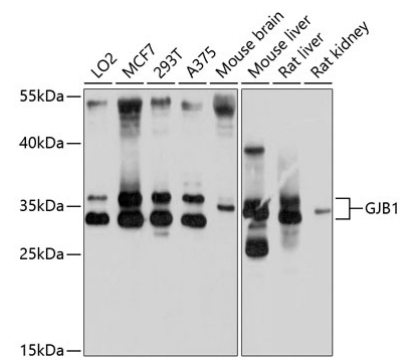
Affinity purification

#### Storage

Store at -20°C. Avoid freeze / thaw cycles.

Buffer: PBS with 0.02% sodium azide, 50% glycerol, pH 7.3.

# Validation Data



Western blot analysis of extracts of various cell lines, using GJB1 antibody (A10112) at 1:1000 dilution.  
Secondary antibody: HRP Goat Anti-Rabbit IgG (H+L) (A5014) at 1:10000 dilution.  
Lysates/proteins: 25µg per lane.  
Blocking buffer: 3% nonfat dry milk in TBST.  
Detection: ECL Basic Kit (RM00020).  
Exposure time: 30s.