

A10110

Leader in Biomolecular Solutions for Life Science



## DFFB Rabbit pAb

Catalog No.: A10110

### Basic Information

#### Observed MW

39kDa

#### Calculated MW

39kDa

#### Category

Polyclonal Antibody

#### Applications

WB, IHC-P, ELISA

#### Cross-Reactivity

Human, Mouse

### Background

Apoptosis is a cell death process that removes toxic and/or useless cells during mammalian development. The apoptotic process is accompanied by shrinkage and fragmentation of the cells and nuclei and degradation of the chromosomal DNA into nucleosomal units. DNA fragmentation factor (DFF) is a heterodimeric protein of 40-kD (DFFB) and 45-kD (DFFA) subunits. DFFA is the substrate for caspase-3 and triggers DNA fragmentation during apoptosis. DFF becomes activated when DFFA is cleaved by caspase-3. The cleaved fragments of DFFA dissociate from DFFB, the active component of DFF. DFFB has been found to trigger both DNA fragmentation and chromatin condensation during apoptosis. Alternatively spliced transcript variants encoding distinct isoforms have been found for this gene but the biological validity of some of these variants has not been determined.

### Recommended Dilutions

WB	1:200 - 1:1000
IHC-P	1:50 - 1:200

### Immunogen Information

#### Gene ID

1677

#### Swiss Prot

O76075

#### Immunogen

Recombinant fusion protein containing a sequence corresponding to amino acids 109-338 of human DFFB (NP\_004393.1).

#### Synonyms

CAD; CPAN; DFF2; DFF40; DFF-40; DFFB

### Contact



[www.abclonal.com](http://www.abclonal.com)

### Product Information

#### Source

Rabbit

#### Isotype

IgG

#### Purification

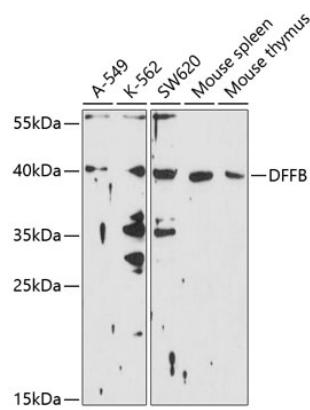
Affinity purification

#### Storage

Store at -20°C. Avoid freeze / thaw cycles.

Buffer: PBS with 0.02% sodium azide, 50% glycerol, pH 7.3.

Validation Data



Western blot analysis of extracts of various cell lines, using DFFB antibody (A10110) at 1:1000 dilution.  
Secondary antibody: HRP Goat Anti-Rabbit IgG (H+L) (A5014) at 1:10000 dilution.  
Lysates/proteins: 25µg per lane.  
Blocking buffer: 3% nonfat dry milk in TBST.  
Detection: ECL Basic Kit (RM00020).  
Exposure time: 90s.