

A10109

Leader in Biomolecular Solutions for Life Science



## SLC31A1 Rabbit pAb

Catalog No.: A10109

2 Publications

### Basic Information

#### Observed MW

30kDa

#### Calculated MW

21kDa

#### Category

Mouse Monoclonal Antibody

#### Applications

WB, ELISA

#### Cross-Reactivity

Human, Mouse

### Background

The protein encoded by this gene is a high-affinity copper transporter found in the cell membrane. The encoded protein functions as a homotrimer to effect the uptake of dietary copper.

### Recommended Dilutions

WB 1:500 - 1:2000

### Immunogen Information

#### Gene ID

1317

#### Swiss Prot

O15431

#### Immunogen

Recombinant fusion protein containing a sequence corresponding to amino acids 1-60 of human SLC31A1 (NP\_001850.1).

#### Synonyms

CTR1; NSCT; COPT1; SLC31A1

### Contact



[www.abclonal.com](http://www.abclonal.com)

### Product Information

#### Source

Rabbit

#### Isotype

IgG

#### Purification

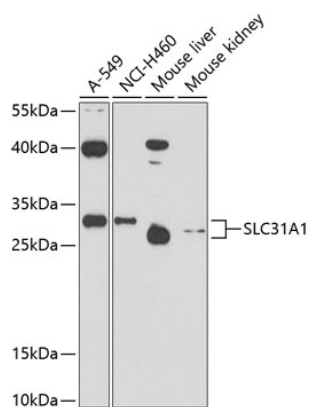
Affinity purification

#### Storage

Store at -20°C. Avoid freeze / thaw cycles.

Buffer: PBS with 0.02% sodium azide, 50% glycerol, pH 7.3.

## Validation Data



Western blot analysis of extracts of various cell lines, using SLC31A1 antibody (A10109) at 1:1000 dilution.

Secondary antibody: HRP Goat Anti-Rabbit IgG (H+L) (AS014) at 1:10000 dilution.

Lysates/proteins: 25µg per lane.

Blocking buffer: 3% nonfat dry milk in TBST.

Detection: ECL Basic Kit (RM00020).

Exposure time: 90s.