

A10107

Leader in Biomolecular Solutions for Life Science



BTN1A1 Rabbit pAb

Catalog No.: A10107

Basic Information

Observed MW

59kDa

Calculated MW

59kDa

Category

Mouse Monoclonal Antibody

Applications

WB, ELISA

Cross-Reactivity

Mouse, Rat

Background

Butyrophilin is the major protein associated with fat droplets in the milk. It is a member of the immunoglobulin superfamily. It may have a cell surface receptor function. The human butyrophilin gene is localized in the major histocompatibility complex (MHC) class I region of 6p and may have arisen relatively recently in evolution by the shuffling of exons between 2 ancestral gene families

Recommended Dilutions

WB 1:500 - 1:2000

Immunogen Information

Gene ID

696

Swiss Prot

Q13410

Immunogen

Recombinant fusion protein containing a sequence corresponding to amino acids 27-210 of human BTN1A1 (NP_001723.2).

Synonyms

BT; BTN; BTN1; BTN1A1

Contact



www.abclonal.com

Product Information

Source

Rabbit

Isotype

IgG

Purification

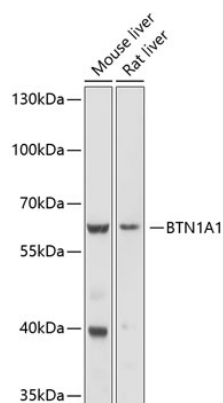
Affinity purification

Storage

Store at -20°C. Avoid freeze / thaw cycles.

Buffer: PBS with 0.02% sodium azide, 50% glycerol, pH 7.3.

Validation Data



Western blot analysis of various lysates using BTN1A1 Rabbit pAb (A10107) at 1:1000 dilution.
Secondary antibody: HRP Goat Anti-Rabbit IgG (H+L) (A5014) at 1:10000 dilution.
Lysates/proteins: 25µg per lane.
Blocking buffer: 3% nonfat dry milk in TBST.
Detection: ECL Basic Kit (RM00020).
Exposure time: 10s.