

A1009

Leader in Biomolecular Solutions for Life Science



## PAX8 Rabbit pAb

Catalog No.: A1009

3 Publications

### Basic Information

#### Observed MW

48kDa

#### Calculated MW

48kDa

#### Category

Mouse Monoclonal Antibody

#### Applications

WB, ELISA

#### Cross-Reactivity

Human, Mouse, Rat

### Background

This gene encodes a member of the paired box (PAX) family of transcription factors. Members of this gene family typically encode proteins that contain a paired box domain, an octapeptide, and a paired-type homeodomain. This nuclear protein is involved in thyroid follicular cell development and expression of thyroid-specific genes. Mutations in this gene have been associated with thyroid dysgenesis, thyroid follicular carcinomas and atypical follicular thyroid adenomas. Alternatively spliced transcript variants encoding different isoforms have been described.

### Recommended Dilutions

WB 1:500 - 1:1000

### Immunogen Information

#### Gene ID

7849

#### Swiss Prot

Q06710

#### Immunogen

A synthetic peptide corresponding to a sequence within amino acids 200-300 of human PAX8 (NP\_003457.1).

#### Synonyms

PAX-8; PAX8

### Contact



[www.abclonal.com](http://www.abclonal.com)

### Product Information

#### Source

Rabbit

#### Isotype

IgG

#### Purification

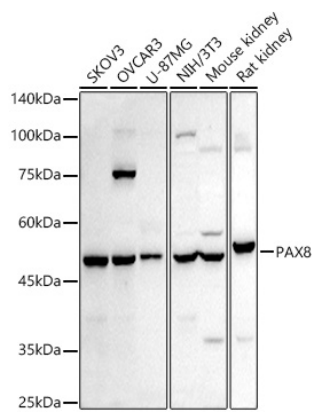
Affinity purification

#### Storage

Store at -20°C. Avoid freeze / thaw cycles.

Buffer: PBS with 0.05% proclin300, 50% glycerol, pH7.3.

# Validation Data



Western blot analysis of extracts of various cell lines, using PAX8 antibody (A1009) at 1:1000 dilution.  
Secondary antibody: HRP Goat Anti-Rabbit IgG (H+L) (A5014) at 1:10000 dilution.  
Lysates/proteins: 25µg per lane.  
Blocking buffer: 3% nonfat dry milk in TBST.  
Detection: ECL Enhanced Kit (RM00021).  
Exposure time: 180s.