

# TRPC5 Rabbit pAb

Catalog No.: A10089

## Basic Information

**Observed MW**

90kDa

**Calculated MW**

111kDa

**Category**

Primary antibody

**Applications**

ELISA, WB, IF/ICC

**Cross-Reactivity**

Human

## Background

This gene belongs to the transient receptor family. It encodes one of the seven mammalian TRPC (transient receptor potential channel) proteins. The encoded protein is a multi-pass membrane protein and is thought to form a receptor-activated non-selective calcium permeant cation channel. The protein is active alone or as a heteromultimeric assembly with TRPC1, TRPC3, and TRPC4. It also interacts with multiple proteins including calmodulin, CABP1, enkurin, Na(+)-H+ exchange regulatory factor (NHERF), interferon-induced GTP-binding protein (MX1), ring finger protein 24 (RNF24), and SEC14 domain and spectrin repeat-containing protein 1 (SESTD1).

## Recommended Dilutions

**WB** 1:500 - 1:1000**IF/ICC** 1:50 - 1:200

## Immunogen Information

**Gene ID**

7224

**Swiss Prot**

Q9UL62

**Immunogen**

A synthetic peptide corresponding to a sequence within amino acids 800-900 of human TRPC5 (NP\_036603.1).

**Synonyms**

TRP5; PPP1R159; TRPC5

## Contact

 | [www.abclonal.com](http://www.abclonal.com)

## Product Information

**Source**

Rabbit

**Isotype**

IgG

**Purification**

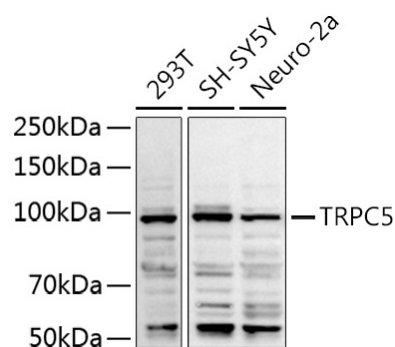
Affinity purification

**Storage**

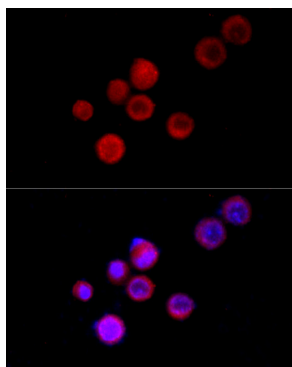
Store at -20°C. Avoid freeze / thaw cycles.

Buffer: PBS with 0.05% proclin300, 50% glycerol, pH7.3.

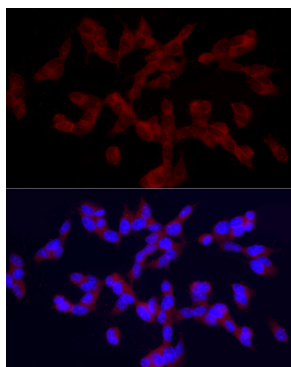
## Validation Data



Western blot analysis of extracts of various cell lines, using TRPC5 antibody (A10089) at 1:1000 dilution.  
Secondary antibody: HRP Goat Anti-Rabbit IgG (H+L) (A5014) at 1:10000 dilution.  
Lysates/proteins: 25µg per lane.  
Blocking buffer: 3% nonfat dry milk in TBST.  
Detection: ECL Basic Kit (RM00020).  
Exposure time: 90s.



Immunofluorescence analysis of Neuro-2a cells using TRPC5 Rabbit pAb (A10089) at dilution of 1:100 (40x lens). Blue: DAPI for nuclear staining.



Immunofluorescence analysis of SH-SY5Y cells using TRPC5 Rabbit pAb (A10089) at dilution of 1:100 (40x lens). Blue: DAPI for nuclear staining.