

A10082

Leader in Biomolecular Solutions for Life Science



## IFNLR1 Rabbit pAb

Catalog No.: A10082

1 Publications

### Basic Information

#### Observed MW

53kDa

#### Calculated MW

58kDa

#### Category

Mouse Monoclonal Antibody

#### Applications

WB, ELISA

#### Cross-Reactivity

Human, Mouse, Rat

### Background

The protein encoded by this gene belongs to the class II cytokine receptor family. This protein forms a receptor complex with interleukine 10 receptor, beta (IL10RB). The receptor complex has been shown to interact with three closely related cytokines, including interleukin 28A (IL28A), interleukin 28B (IL28B), and interleukin 29 (IL29). The expression of all three cytokines can be induced by viral infection. The cells overexpressing this protein have been found to have enhanced responses to IL28A and IL29, but decreased response to IL28B. Three alternatively spliced transcript variants encoding distinct isoforms have been reported.

### Recommended Dilutions

WB 1:1000 - 1:4000

### Immunogen Information

#### Gene ID

163702

#### Swiss Prot

Q8IU57

#### Immunogen

Recombinant fusion protein containing a sequence corresponding to amino acids 21-228 of human IFNLR1 (NP\_734464.1).

#### Synonyms

IFNLR; LICR2; IL28RA; CRF2/12; IL-28R1; IFNLR1

### Contact



[www.abclonal.com](http://www.abclonal.com)

### Product Information

#### Source

Rabbit

#### Isotype

IgG

#### Purification

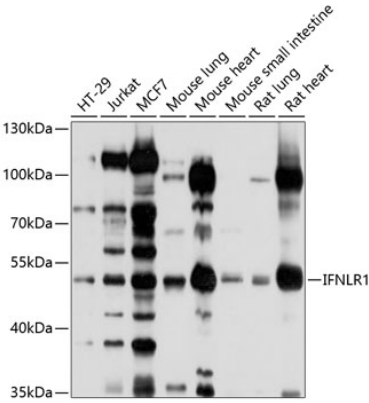
Affinity purification

#### Storage

Store at -20°C. Avoid freeze / thaw cycles.

Buffer: PBS with 0.02% sodium azide, 50% glycerol, pH 7.3.

# Validation Data



Western blot analysis of extracts of various cell lines, using IFNLR1 antibody (A10082) at 1:1000 dilution.  
Secondary antibody: HRP Goat Anti-Rabbit IgG (H+L) (A5014) at 1:10000 dilution.  
Lysates/proteins: 25µg per lane.  
Blocking buffer: 3% nonfat dry milk in TBST.  
Detection: ECL Basic Kit (RM00020).  
Exposure time: 10s.