

A10076

Leader in Biomolecular Solutions for Life Science



## DAG1 Rabbit pAb

Catalog No.: A10076

1 Publications

### Basic Information

#### Observed MW

43kDa

#### Calculated MW

97kDa

#### Category

Polyclonal Antibody

#### Applications

WB,IF/ICC,IP,ELISA

#### Cross-Reactivity

Mouse,Rat

### Background

This gene encodes dystroglycan, a central component of dystrophin-glycoprotein complex that links the extracellular matrix and the cytoskeleton in the skeletal muscle. The encoded preproprotein undergoes O- and N-glycosylation, and proteolytic processing to generate alpha and beta subunits. Certain mutations in this gene are known to cause distinct forms of muscular dystrophy. Alternative splicing results in multiple transcript variants, all encoding the same protein.

### Recommended Dilutions

WB 1:1000 - 1:5000

IF/ICC 1:20 - 1:100

IP 0.5µg-4µg antibody for  
200µg-400µg extracts of  
whole cells

### Immunogen Information

#### Gene ID

1605

#### Swiss Prot

Q14118

#### Immunogen

Recombinant fusion protein containing a sequence corresponding to amino acids 776-895 of human DAG1 (NP\_001171108.1).

#### Synonyms

A3a; DAG; AGRNR; 156DAG; MDDGA9; MDDGC7; MDDGC9; LGMDR16; DAG1

### Contact



[www.abclonal.com](http://www.abclonal.com)

### Product Information

#### Source

Rabbit

#### Isotype

IgG

#### Purification

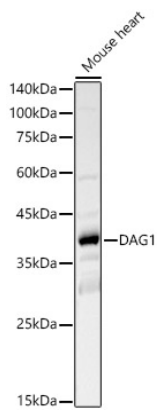
Affinity purification

#### Storage

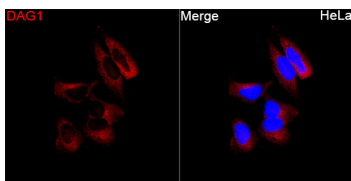
Store at -20°C. Avoid freeze / thaw cycles.

Buffer: PBS with 0.02% sodium azide,50% glycerol,pH7.3.

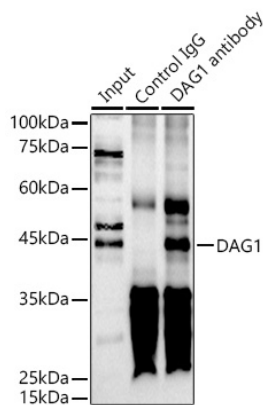
## Validation Data



Western blot analysis of lysates from Mouse heart, using DAG1 Rabbit pAb (A10076) at 1:2000 dilution.  
Secondary antibody: HRP Goat Anti-Rabbit IgG (H+L) (AS014) at 1:10000 dilution.  
Lysates/proteins: 25µg per lane.  
Blocking buffer: 3% nonfat dry milk in TBST.  
Detection: ECL Basic Kit (RM00020).  
Exposure time: 180s.



Immunofluorescence analysis of HeLa cells using DAG1 Rabbit pAb(A10076) at a dilution of 1:200 (40x lens). Secondary antibody: Cy3 Goat Anti-Rabbit IgG (H+L)(AS007) at 1:500 dilution. Blue: DAPI for nuclear staining.



Immunoprecipitation analysis of 300 µg extracts of HeLa cells using 3 µg DAG1 antibody (A10076). Western blot was performed from the immunoprecipitate using DAG1 antibody (A10076) at a dilution of 1:1000.