

A10070

Leader in Biomolecular Solutions for Life Science



## ROBO2 Rabbit pAb

Catalog No.: A10070

### Basic Information

**Observed MW**

175kDa

**Calculated MW**

151kDa

**Category**

Polyclonal Antibody

**Applications**

WB, ELISA

**Cross-Reactivity**

Human, Mouse, Rat

### Background

The protein encoded by this gene belongs to the ROBO family, part of the immunoglobulin superfamily of proteins that are highly conserved from fly to human. The encoded protein is a transmembrane receptor for the slit homolog 2 protein and functions in axon guidance and cell migration. Mutations in this gene are associated with vesicoureteral reflux, characterized by the backward flow of urine from the bladder into the ureters or the kidney. Alternative splicing results in multiple transcript variants.

### Recommended Dilutions

WB 1:500 - 1:2000

### Immunogen Information

**Gene ID**

6092

**Swiss Prot**

Q9HCK4

**Immunogen**

Recombinant fusion protein containing a sequence corresponding to amino acids 450-660 of human ROBO2 (NP\_001122401.1).

**Synonyms**

SAX3; ROBO2

### Contact



[www.abclonal.com](http://www.abclonal.com)

### Product Information

**Source**

Rabbit

**Isotype**

IgG

**Purification**

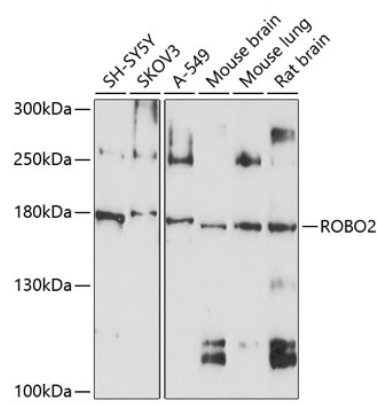
Affinity purification

**Storage**

Store at -20°C. Avoid freeze / thaw cycles.

Buffer: PBS with 0.02% sodium azide, 50% glycerol, pH 7.3.

Validation Data



Western blot analysis of extracts of various cell lines, using ROBO2 antibody (A10070) at 1:1000 dilution. Secondary antibody: HRP Goat Anti-Rabbit IgG (H+L) (AS014) at 1:10000 dilution. Lysates/proteins: 25µg per lane. Blocking buffer: 3% nonfat dry milk in TBST. Detection: ECL Enhanced Kit (RM00021). Exposure time: 90s.