

A10038

Leader in Biomolecular Solutions for Life Science



# INF2 Rabbit pAb

Catalog No.: A10038

## Basic Information

### Observed MW

180kDa

### Calculated MW

136kDa

### Category

Mouse Monoclonal Antibody

### Applications

WB, ELISA

### Cross-Reactivity

Human

## Background

This gene represents a member of the formin family of proteins. It is considered a diaphanous formin due to the presence of a diaphanous inhibitory domain located at the N-terminus of the encoded protein. Studies of a similar mouse protein indicate that the protein encoded by this locus may function in polymerization and depolymerization of actin filaments. Mutations at this locus have been associated with focal segmental glomerulosclerosis 5.

## Recommended Dilutions

WB 1:500 - 1:1000

## Immunogen Information

### Gene ID

64423

### Swiss Prot

Q27J81

### Immunogen

Recombinant fusion protein containing a sequence corresponding to amino acids 1-190 of human INF2 (NP\_116103.1).

### Synonyms

FSGS5; CMTDIE; pp9484; C14orf151; C14orf173; INF2

## Contact



[www.abclonal.com](http://www.abclonal.com)

## Product Information

### Source

Rabbit

### Isotype

IgG

### Purification

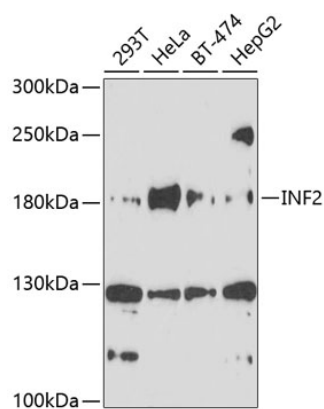
Affinity purification

### Storage

Store at -20°C. Avoid freeze / thaw cycles.

Buffer: PBS with 0.02% sodium azide, 50% glycerol, pH 7.3.

## Validation Data



Western blot analysis of various lysates using INF2 Rabbit pAb (A10038) at 1:1000 dilution.  
Secondary antibody: HRP Goat Anti-Rabbit IgG (H+L) (A5014) at 1:10000 dilution.  
Lysates/proteins: 25µg per lane.  
Blocking buffer: 3% nonfat dry milk in TBST.  
Detection: ECL Basic Kit (RM00020).  
Exposure time: 90s.