

A10029

Leader in Biomolecular Solutions for Life Science



RBP1 Rabbit pAb

Catalog No.: A10029

Basic Information

Observed MW

16kDa

Calculated MW

16kDa

Category

Polyclonal Antibody

Applications

WB,IF/ICC,ELISA

Cross-Reactivity

Human,Mouse,Rat

Background

This gene encodes the carrier protein involved in the transport of retinol (vitamin A alcohol) from the liver storage site to peripheral tissue. Vitamin A is a fat-soluble vitamin necessary for growth, reproduction, differentiation of epithelial tissues, and vision. Multiple transcript variants encoding different isoforms have been found for this gene.

Recommended Dilutions

WB	1:500 - 1:1000
IF/ICC	1:50 - 1:200

Immunogen Information

Gene ID

5947

Swiss Prot

P09455

Immunogen

Recombinant fusion protein containing a sequence corresponding to amino acids 1-135 of human RBP1 (NP_001352869.1).

Synonyms

CRBP; RBPC; CRBP1; CRBPI; hCRBP1; CRABP-I; RBP1

Contact



www.abclonal.com

Product Information

Source

Rabbit

Isotype

IgG

Purification

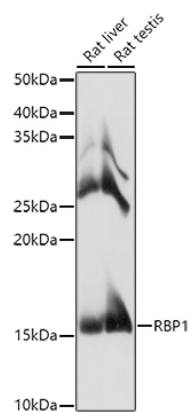
Affinity purification

Storage

Store at -20°C. Avoid freeze / thaw cycles.

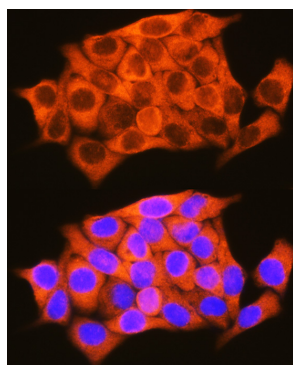
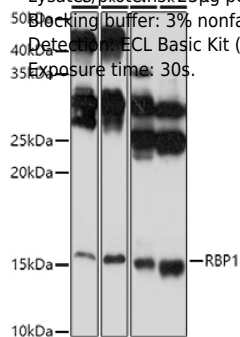
Buffer: PBS with 0.01% thimerosal, 50% glycerol, pH7.3.

Validation Data

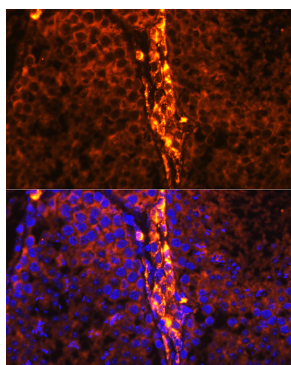


Western blot analysis of extracts of various cell lines, using RBP1 antibody (A10029) at 1:1000 dilution.
 Secondary antibody: HRP Goat Anti-Rabbit IgG (H+L) (AS014) at 1:10000 dilution.
 Lysates/proteins: 25µg per lane.
 Blocking buffer: 3% nonfat dry milk in TBST.
 Detection: ECL Basic Kit (RM00020).
 Exposure time: 3s.

Western blot analysis of extracts of various cell lines, using RBP1 antibody (A10029) at 1:1000 dilution.
 Secondary antibody: HRP Goat Anti-Rabbit IgG (H+L) (AS014) at 1:10000 dilution.
 Lysates/proteins: 25µg per lane.
 Blocking buffer: 3% nonfat dry milk in TBST.
 Detection: ECL Basic Kit (RM00020).
 Exposure time: 30s.



Immunofluorescence analysis of HeLa cells using RBP1 Rabbit pAb (A10029) at dilution of 1:100 (40x lens). Blue: DAPI for nuclear staining.



Immunofluorescence analysis of mouse testis using RBP1 Rabbit pAb (A10029) at dilution of 1:100 (40x lens). Blue: DAPI for nuclear staining.