

A10025

Leader in Biomolecular Solutions for Life Science



RBM22 Rabbit pAb

Catalog No.: A10025

1 Publications

Basic Information

Observed MW

50kDa

Calculated MW

47kDa

Category

Polyclonal Antibody

Applications

WB, ELISA

Cross-Reactivity

Human, Mouse, Rat

Background

This gene encodes an RNA binding protein. The encoded protein may play a role in cell division and may be involved in pre-mRNA splicing. Related pseudogenes exist on chromosomes 6, 7, 9, 13, 16, 18, and X.

Recommended Dilutions

WB 1:500 - 1:1000

Immunogen Information

Gene ID

55696

Swiss Prot

Q9NW64

Immunogen

Recombinant fusion protein containing a sequence corresponding to amino acids 1-230 of human RBM22 (NP_060517.1).

Synonyms

Cwc2; ZC3H16; fSAP47; RBM22

Contact



www.abclonal.com

Product Information

Source

Rabbit

Isotype

IgG

Purification

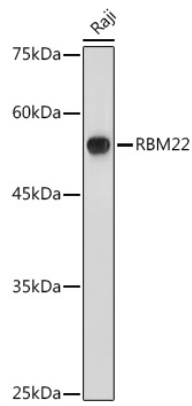
Affinity purification

Storage

Store at -20°C. Avoid freeze / thaw cycles.

Buffer: PBS with 0.01% thimerosal, 50% glycerol, pH 7.3.

Validation Data



Western blot analysis of extracts of Raji cells, using RBM22 antibody (A10025) at 1:1000 dilution.
Secondary antibody: HRP Goat Anti-Rabbit IgG (H+L) (AS014) at 1:10000 dilution.
Lysates/proteins: 25µg per lane.
Blocking buffer: 3% nonfat dry milk in TBST.
Detection: ECL Basic Kit (RM00020).
Exposure time: 1s.

Western blot analysis of extracts of various cell lines, using RBM22 antibody (A10025) at 1:1000 dilution.
Secondary antibody: HRP Goat Anti-Rabbit IgG (H+L) (AS014) at 1:10000 dilution.
Lysates/proteins: 25µg per lane.
Blocking buffer: 3% nonfat dry milk in TBST.
Detection: ECL Basic Kit (RM00020).
Exposure time: 30s.

