

A10020

Leader in Biomolecular Solutions for Life Science



# MCCC1 Rabbit pAb

Catalog No.: A10020

## Basic Information

### Observed MW

726aa/80kDa

### Calculated MW

80kDa

### Category

Mouse Monoclonal Antibody

### Applications

WB, IHC-P, ELISA

### Cross-Reactivity

Human, Mouse, Rat

## Background

This gene encodes the large subunit of 3-methylcrotonyl-CoA carboxylase. This enzyme functions as a heterodimer and catalyzes the carboxylation of 3-methylcrotonyl-CoA to form 3-methylglutaconyl-CoA. Mutations in this gene are associated with 3-Methylcrotonylglycinuria, an autosomal recessive disorder of leucine catabolism.

## Recommended Dilutions

WB	1:1000 - 1:5000
IHC-P	1:50 - 1:100

## Immunogen Information

### Gene ID

56922

### Swiss Prot

Q96RQ3

### Immunogen

Recombinant fusion protein containing a sequence corresponding to amino acids 640-725 of human MCCC1 (NP\_064551.3).

### Synonyms

MCCA; MCC-B; MCCCalpha; MCCC1

## Contact



[www.abclonal.com](http://www.abclonal.com)

## Product Information

### Source

Rabbit

### Isotype

IgG

### Purification

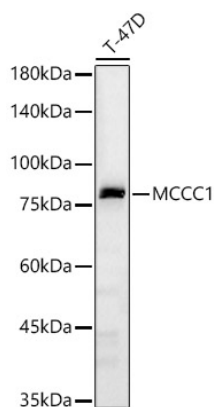
Affinity purification

### Storage

Store at -20°C. Avoid freeze / thaw cycles.

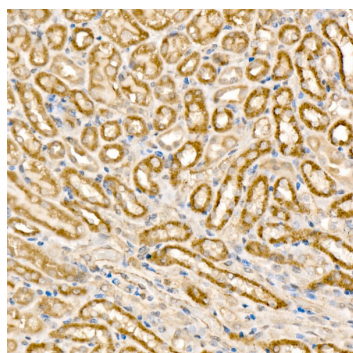
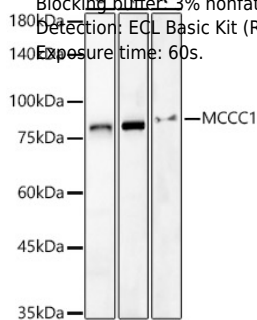
Buffer: PBS with 0.02% sodium azide, 50% glycerol, pH 7.3.

## Validation Data

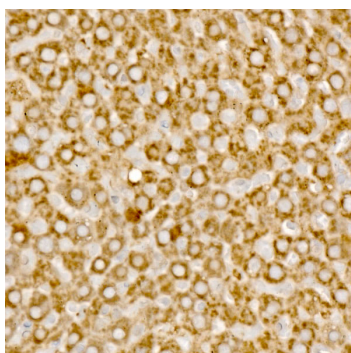


Western blot analysis of T-47D, using MCCC1 Rabbit pAb (A10020) at 1:2000 dilution.  
Secondary antibody: HRP Goat Anti-Rabbit IgG (H+L) (AS014) at 1:10000 dilution.  
Lysates/proteins: 25µg per lane.  
Blocking buffer: 3% nonfat dry milk in TBST.  
Detection: ECL Basic Kit (RM00020).  
Exposure time: 60s.

Western blot analysis of various lysates, using MCCC1 Rabbit pAb (A10020) at 1:2000 dilution.  
Secondary antibody: HRP Goat Anti-Rabbit IgG (H+L) (AS014) at 1:10000 dilution.  
Lysates/proteins: 25 µg per lane.  
Blocking buffer: 3% nonfat dry milk in TBST.  
Detection: ECL Basic Kit (RM00020).  
Exposure time: 60s.



Immunohistochemistry analysis of paraffin-embedded mouse kidney using MCCC1 Rabbit pAb (A10020) at dilution of 1:100 (40x lens). Perform high pressure antigen retrieval with 10 mM citrate buffer pH 6.0 before commencing with IHC staining protocol.



Immunohistochemistry analysis of paraffin-embedded rat liver using MCCC1 Rabbit pAb (A10020) at dilution of 1:100 (40x lens). Perform high pressure antigen retrieval with 10 mM citrate buffer pH 6.0 before commencing with IHC staining protocol.