

A10015

Leader in Biomolecular Solutions for Life Science



GABRB3 Rabbit pAb

Catalog No.: A10015

3 Publications

Basic Information

Observed MW

65kDa

Calculated MW

54kDa

Category

Polyclonal Antibody

Applications

WB, ELISA

Cross-Reactivity

Human

Background

This gene encodes a member of the ligand-gated ionic channel family. The encoded protein is one the subunits of a multi-subunit chloride channel that serves as the receptor for gamma-aminobutyric acid, a major inhibitory neurotransmitter of the mammalian nervous system. This gene is located on the long arm of chromosome 15 in a cluster with two other genes encoding related subunits of the family. This gene may be associated with the pathogenesis of several disorders including Angelman syndrome, Prader-Willi syndrome, nonsyndromic orofacial clefts, epilepsy and autism. Alternatively spliced transcript variants encoding distinct isoforms have been described.

Recommended Dilutions

WB 1:500 - 1:1000

Immunogen Information

Gene ID

2562

Swiss Prot

P28472

Immunogen

Recombinant fusion protein containing a sequence corresponding to amino acids 330-460 of human GABRB3 (NP_000805.1).

Synonyms

ECA5; DEE43; EIEE43; GABRB3

Contact



www.abclonal.com

Product Information

Source

Rabbit

Isotype

IgG

Purification

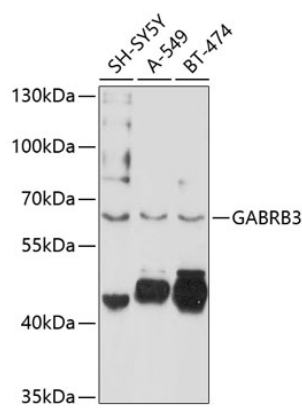
Affinity purification

Storage

Store at -20°C. Avoid freeze / thaw cycles.

Buffer: PBS with 0.02% sodium azide, 50% glycerol, pH 7.3.

Validation Data



Western blot analysis of various lysates using GABRB3 Rabbit pAb (A10015) at 1:1000 dilution.
Secondary antibody: HRP Goat Anti-Rabbit IgG (H+L) (AS014) at 1:10000 dilution.
Lysates/proteins: 25µg per lane.
Blocking buffer: 3% nonfat dry milk in TBST.
Detection: ECL Basic Kit (RM00020).
Exposure time: 60s.