

RPRM Rabbit pAb

Catalog No.: A10013

Basic Information

Observed MW

20kDa

Calculated MW

12kDa

Category

Primary antibody

Applications

ELISA, WB

Cross-Reactivity

Mouse

Background

Predicted to be involved in regulation of mitotic cell cycle. Predicted to act upstream of or within regulation of cell cycle. Predicted to be integral component of membrane. Predicted to be active in cytoplasm.

Recommended Dilutions

WB 1:500 - 1:2000

Immunogen Information

Gene ID

56475

Swiss Prot

Q9NS64

Immunogen

Recombinant fusion protein containing a sequence corresponding to amino acids 1-109 of human RPRM (NP_062819.1).

Synonyms

REPRIMO; RPRM

Contact

 | www.abclonal.com

Product Information

Source

Rabbit

Isotype

IgG

Purification

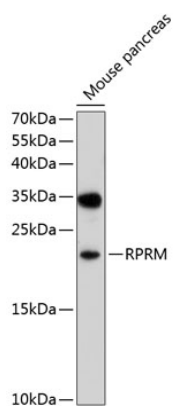
Affinity purification

Storage

Store at -20°C. Avoid freeze / thaw cycles.

Buffer: PBS with 0.02% sodium azide, 50% glycerol, pH 7.3.

Validation Data



Western blot analysis of extracts of mouse pancreas, using RPRM antibody (A10013) at 1:1000 dilution.

Secondary antibody: HRP Goat Anti-Rabbit IgG (H+L) (A5014) at 1:10000 dilution.

Lysates/proteins: 25µg per lane.

Blocking buffer: 3% nonfat dry milk in TBST.

Detection: ECL Basic Kit (RM00020).

Exposure time: 30s.