

A10007

Leader in Biomolecular Solutions for Life Science



SCN8A Rabbit pAb

Catalog No.: A10007

Basic Information

Observed MW

165kDa

Calculated MW

225kDa

Category

Mouse Monoclonal Antibody

Applications

WB, ELISA

Cross-Reactivity

Human

Background

This gene encodes a member of the sodium channel alpha subunit gene family. The encoded protein forms the ion pore region of the voltage-gated sodium channel. This protein is essential for the rapid membrane depolarization that occurs during the formation of the action potential in excitable neurons. Mutations in this gene are associated with cognitive disability, pancerebellar atrophy and ataxia. Alternate splicing results in multiple transcript variants.

Recommended Dilutions

WB 1:200 - 1:1000

Immunogen Information

Gene ID

6334

Swiss Prot

Q9UQD0

Immunogen

Recombinant fusion protein containing a sequence corresponding to amino acids 1350-1440 of human SCN8A (NP_055006.1).

Synonyms

MED; PN4; CIAT; BFIS5; DEE13; NaCh6; CERIII; EIEE13; MYOCL2; Nav1.6; SCN8A

Contact



www.abclonal.com

Product Information

Source

Rabbit

Isotype

IgG

Purification

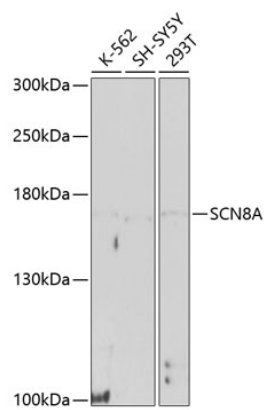
Affinity purification

Storage

Store at -20°C. Avoid freeze / thaw cycles.

Buffer: PBS with 0.02% sodium azide, 50% glycerol, pH 7.3.

Validation Data



Western blot analysis of extracts of various cell lines, using SCN8A antibody (A10007) at 1:1000 dilution.
Secondary antibody: HRP Goat Anti-Rabbit IgG (H+L) (A5014) at 1:10000 dilution.
Lysates/proteins: 25µg per lane.
Blocking buffer: 3% nonfat dry milk in TBST.
Detection: ECL Basic Kit (RM00020).
Exposure time: 90s.