

A10006

Leader in Biomolecular Solutions for Life Science



## CD300A Rabbit pAb

Catalog No.: A10006

### Basic Information

**Observed MW**

40-70kDa

**Calculated MW**

33kDa

**Category**

Polyclonal Antibody

**Applications**

WB, ELISA

**Cross-Reactivity**

Human

### Background

This gene encodes a member of the CD300 glycoprotein family of cell surface proteins found on leukocytes involved in immune response signaling pathways. This gene is located on chromosome 17 in a cluster with all but one of the other family members. Multiple transcript variants encoding different isoforms have been found for this gene.

### Recommended Dilutions

WB 1:1000 - 1:5000

### Immunogen Information

**Gene ID**

11314

**Swiss Prot**

Q9UGN4

**Immunogen**

Recombinant fusion protein containing a sequence corresponding to amino acids 18-180 of human CD300A (NP\_009192.2).

**Synonyms**

IRC1; IRC2; CLM-8; IRp60; IGSF12; CMRF35H; CMRF-35H; CMRF35-H; CMRF35H9; CMRF35-H9; IRC1/IRC2; CMRF-35-H9; CD300A

### Contact



[www.abclonal.com](http://www.abclonal.com)

### Product Information

**Source**

Rabbit

**Isotype**

IgG

**Purification**

Affinity purification

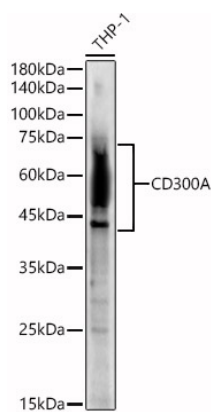
**Storage**

Store at -20°C. Avoid freeze / thaw cycles.

Buffer: PBS with 0.02% sodium azide, 50% glycerol, pH 7.3.

## Validation Data

---



Western blot analysis of THP-1, using CD300A antibody (A10006) at 1:2000 dilution.  
Secondary antibody: HRP Goat Anti-Rabbit IgG (H+L) (AS014) at 1:10000 dilution.  
Lysates/proteins: 25µg per lane.  
Blocking buffer: 3% nonfat dry milk in TBST.  
Detection: ECL Enhanced Kit (RM00021).  
Exposure time: 30s.