

A0975

Leader in Biomolecular Solutions for Life Science



## [KO Validated] Rap1A Rabbit pAb

Catalog No.: A0975

**KO** Validated

2 Publications

### Basic Information

#### Observed MW

21kDa

#### Calculated MW

21kDa

#### Category

Polyclonal Antibody

#### Applications

WB, IHC-P, ELISA

#### Cross-Reactivity

Human, Mouse, Rat

### Background

This gene encodes a member of the Ras family of small GTPases. The encoded protein undergoes a change in conformational state and activity, depending on whether it is bound to GTP or GDP. This protein is activated by several types of guanine nucleotide exchange factors (GEFs), and inactivated by two groups of GTPase-activating proteins (GAPs). The activation status of the encoded protein is therefore affected by the balance of intracellular levels of GEFs and GAPs. The encoded protein regulates signaling pathways that affect cell proliferation and adhesion, and may play a role in tumor malignancy. Pseudogenes of this gene have been defined on chromosomes 14 and 17. Alternative splicing results in multiple transcript variants.

### Recommended Dilutions

WB	1:500 - 1:1000
IHC-P	1:50 - 1:100

### Immunogen Information

#### Gene ID

5906

#### Swiss Prot

P62834

#### Immunogen

A synthetic peptide corresponding to a sequence within amino acids 39-138 of human Rap1A (NP\_002875.1).

#### Synonyms

RAP1; C21KG; G-22K; KREV1; KREV-1; SMGP21; 1A

### Contact



[www.abclonal.com](http://www.abclonal.com)

### Product Information

#### Source

Rabbit

#### Isotype

IgG

#### Purification

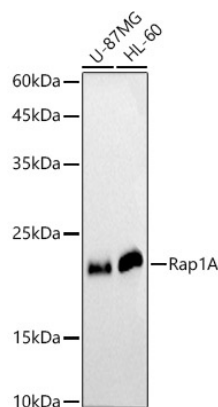
Affinity purification

#### Storage

Store at -20°C. Avoid freeze / thaw cycles.

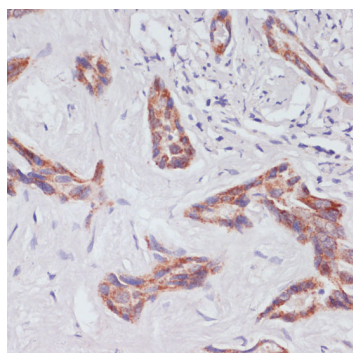
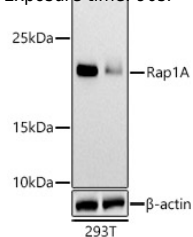
Buffer: PBS with 0.01% thimerosal, 50% glycerol, pH 7.3.

## Validation Data

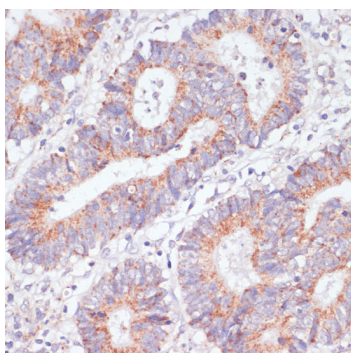


Western blot analysis of various lysates using [KO Validated] Rap1A Rabbit pAb (A0975) at 1:1000 dilution.  
 Secondary antibody: HRP Goat Anti-Rabbit IgG (H+L) (AS014) at 1:10000 dilution.  
 Lysates/proteins: 25µg per lane.  
 Blocking buffer: 3% nonfat dry milk in TBST.  
 Detection: ECL Basic Kit (RM00020).  
 Exposure time: 90s.

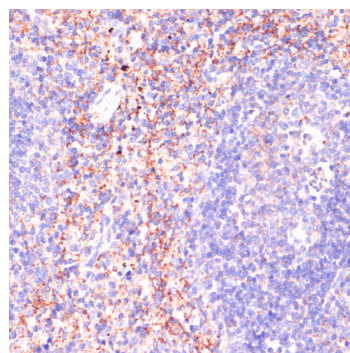
Western blot analysis of lysates from wild type(WT) and Rap1A knockdown (KD) 293T cells, using [KO Validated] Rap1A Rabbit pAb (A0975) at 1:1000 dilution.  
 Secondary antibody: HRP Goat Anti-Rabbit IgG (H+L) (AS014) at 1:10000 dilution.  
 Lysates/proteins: 25µg per lane.  
 Blocking buffer: 3% nonfat dry milk in TBST.  
 Detection: ECL Basic Kit (RM00020).  
 Exposure time: 90s.



Immunohistochemistry analysis of Rap1A in paraffin-embedded human liver cancer using [KO Validated] Rap1A Rabbit pAb (A0975) at dilution of 1:100 (40x lens). Perform microwave antigen retrieval with 10 mM PBS buffer pH 7.2 before commencing with IHC staining protocol.



Immunohistochemistry analysis of Rap1A in paraffin-embedded human colon carcinoma using [KO Validated] Rap1A Rabbit pAb (A0975) at dilution of 1:100 (40x lens). Perform microwave antigen retrieval with 10 mM PBS buffer pH 7.2 before commencing with IHC staining protocol.



Immunohistochemistry analysis of Rap1A in paraffin-embedded mouse spleen using [KO Validated] Rap1A Rabbit pAb (A0975) at dilution of 1:100 (40x lens). Perform microwave antigen retrieval with 10 mM PBS buffer pH 7.2 before commencing with IHC staining protocol.