

A0964

Leader in Biomolecular Solutions for Life Science



## Caspase-1 Rabbit pAb

Catalog No.: A0964

207 Publications

### Basic Information

#### Observed MW

45kDa

#### Calculated MW

45kDa

#### Category

Polyclonal Antibody

#### Applications

WB,IF/ICC,ELISA

#### Cross-Reactivity

Human,Mouse,Rat

### Background

This gene encodes a protein which is a member of the cysteine-aspartic acid protease (caspase) family. Sequential activation of caspases plays a central role in the execution-phase of cell apoptosis. Caspases exist as inactive proenzymes which undergo proteolytic processing at conserved aspartic residues to produce 2 subunits, large and small, that dimerize to form the active enzyme. This gene was identified by its ability to proteolytically cleave and activate the inactive precursor of interleukin-1, a cytokine involved in the processes such as inflammation, septic shock, and wound healing. This gene has been shown to induce cell apoptosis and may function in various developmental stages. Studies of a similar gene in mouse suggest a role in the pathogenesis of Huntington disease. Alternative splicing results in transcript variants encoding distinct isoforms.

### Recommended Dilutions

WB 1:1000 - 1:5000

IF/ICC 1:50 - 1:200

### Immunogen Information

#### Gene ID

834

#### Swiss Prot

P29466

#### Immunogen

A synthetic peptide corresponding to a sequence within amino acids 201-300 of human Caspase 1 (NP\_150634.1).

#### Synonyms

ICE; P45; IL1BC; Caspase-1

### Contact



[www.abclonal.com](http://www.abclonal.com)

### Product Information

#### Source

Rabbit

#### Isotype

IgG

#### Purification

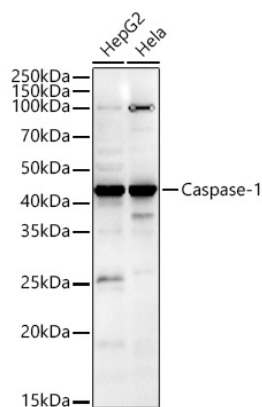
Affinity purification

#### Storage

Store at -20°C. Avoid freeze / thaw cycles.

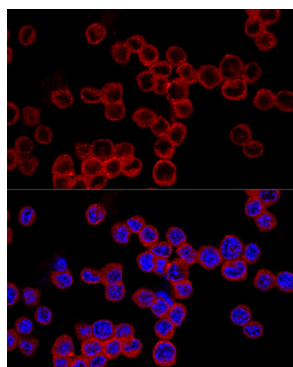
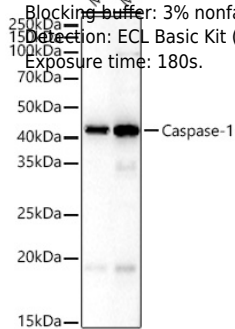
Buffer: PBS with 0.01% thimerosal, 50% glycerol, pH 7.3.

## Validation Data

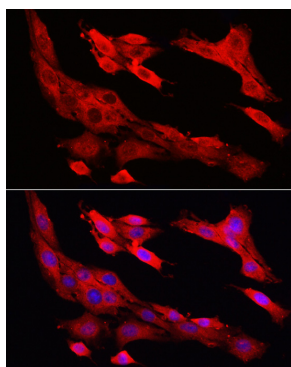


Western blot analysis of various lysates, using CASP1 Rabbit pAb (A0964) at 1:1800 dilution.  
 Secondary antibody: HRP Goat Anti-Rabbit IgG (H+L) (A5014) at 1:10000 dilution.  
 Lysates/proteins: 25µg per lane.  
 Blocking buffer: 3% nonfat dry milk in TBST.  
 Detection: ECL Enhanced Kit (RM00021).  
 Exposure time: 60s.

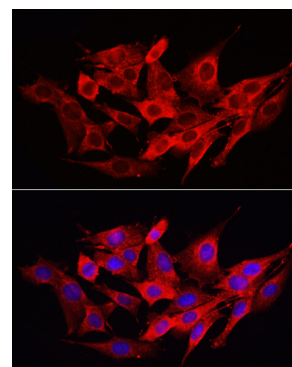
Western blot analysis of various lysates, using CASP1 Rabbit pAb (A0964) at 1:1800 dilution.  
 Secondary antibody: HRP Goat Anti-Rabbit IgG (H+L) (A5014) at 1:10000 dilution.  
 Lysates/proteins: 25µg per lane.  
 Blocking buffer: 3% nonfat dry milk in TBST.  
 Detection: ECL Basic Kit (RM00020).  
 Exposure time: 180s.



Confocal immunofluorescence analysis of Raw264.7 cells using Caspase-1 Rabbit pAb (A0964) at dilution of 1:200. Blue: DAPI for nuclear staining.



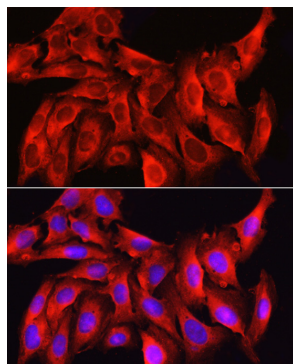
Immunofluorescence analysis of PC-12 cells using CASP1 Rabbit pAb (A0964) at dilution of 1:100 (40x lens). Secondary antibody: Cy3 Goat Anti-Rabbit IgG (H+L) (A5007) at 1:500 dilution. Blue: DAPI for nuclear staining.



Immunofluorescence analysis of NIH/3T3 cells using Caspase-1 Rabbit pAb (A0964) at dilution of 1:200 (40x lens). Secondary antibody: Cy3 Goat Anti-Rabbit IgG (H+L) (A5007) at 1:500 dilution. Blue: DAPI for nuclear staining.

## Validation Data

---



Immunofluorescence analysis of U2OS cells using Caspase-1 Rabbit pAb (A0964) at dilution of 1:200 (40x lens). Secondary antibody: Cy3 Goat Anti-Rabbit IgG (H+L) (AS007) at 1:500 dilution. Blue: DAPI for nuclear staining.