

A0917

Leader in Biomolecular Solutions for Life Science



IKK γ Rabbit pAb

Catalog No.: A0917

6 Publications

Basic Information

Observed MW

50kDa

Calculated MW

48kDa

Category

Mouse Monoclonal Antibody

Applications

WB, IHC-P, IF/ICC, ELISA

Cross-Reactivity

Human, Mouse, Rat

Background

This gene encodes the regulatory subunit of the inhibitor of kappaB kinase (IKK) complex, which activates NF-kappaB resulting in activation of genes involved in inflammation, immunity, cell survival, and other pathways. Mutations in this gene result in incontinentia pigmenti, hypohidrotic ectodermal dysplasia, and several other types of immunodeficiencies. A pseudogene highly similar to this locus is located in an adjacent region of the X chromosome.

Recommended Dilutions

WB	1:1000 - 1:5000
IHC-P	1:50 - 1:100
IF/ICC	1:50 - 1:200

Immunogen Information

Gene ID

8517

Swiss Prot

Q9Y6K9

Immunogen

Recombinant fusion protein containing a sequence corresponding to amino acids 250-390 of human IKK γ (NP_003630.1).

Synonyms

IP; IP1; IP2; FIP3; IKKG; IPD2; NEMO; FIP-3; Fip3p; IMD33; SAIDX; AMCBX1; EDAID1; IKKAP1; ZC2HC9; IKK-gamma; IKK γ

Contact



www.abclonal.com

Product Information

Source

Rabbit

Isotype

IgG

Purification

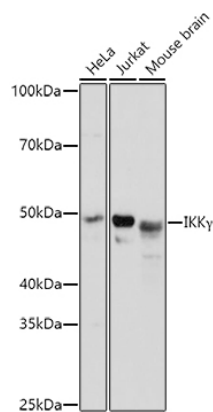
Affinity purification

Storage

Store at -20°C. Avoid freeze / thaw cycles.

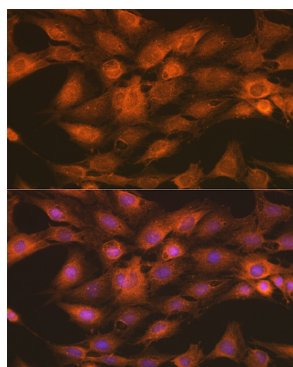
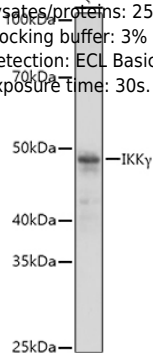
Buffer: PBS with 0.01% thimerosal, 50% glycerol, pH 7.3.

Validation Data

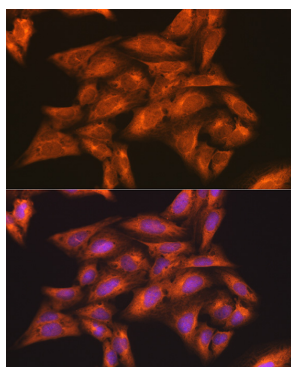


Western blot analysis of various lysates using IKK γ Rabbit pAb (A0917) at 1:3000 dilution.
 Secondary antibody: HRP Goat Anti-Rabbit IgG (H+L) (A5014) at 1:10000 dilution.
 Lysates/proteins: 25 μ g per lane.
 Blocking buffer: 3% nonfat dry milk in TBST.
 Detection: ECL Basic Kit (RM00020).
 Exposure time: 3s.

Western blot analysis of lysates from Rat brain, using IKK γ Rabbit pAb (A0917) at 1:3000 dilution.
 Secondary antibody: HRP Goat Anti-Rabbit IgG (H+L) (A5014) at 1:10000 dilution.
 Lysates/proteins: 25 μ g per lane.
 Blocking buffer: 3% nonfat dry milk in TBST.
 Detection: ECL Basic Kit (RM00020).
 Exposure Time: 30s.



Immunofluorescence analysis of C6 cells using IKK γ Rabbit pAb (A0917) at dilution of 1:100 (40x lens). Secondary antibody: Cy3 Goat Anti-Rabbit IgG (H+L) (A5007) at 1:500 dilution. Blue: DAPI for nuclear staining.



Immunofluorescence analysis of U-2 OS cells using IKK γ Rabbit pAb (A0917) at dilution of 1:100 (40x lens). Secondary antibody: Cy3 Goat Anti-Rabbit IgG (H+L) (A5007) at 1:500 dilution. Blue: DAPI for nuclear staining.