

A0901

Leader in Biomolecular Solutions for Life Science



ILK Rabbit pAb

Catalog No.: A0901

Basic Information

Observed MW

48kDa

Calculated MW

51kDa

Category

Polyclonal Antibody

Applications

WB, IHC-P, ELISA

Cross-Reactivity

Human, Mouse, Rat

Background

This gene encodes a protein with a kinase-like domain and four ankyrin-like repeats. The encoded protein associates at the cell membrane with the cytoplasmic domain of beta integrins, where it regulates integrin-mediated signal transduction. Activity of this protein is important in the epithelial to mesenchymal transition, and over-expression of this gene is implicated in tumor growth and metastasis. Alternative splicing results in multiple transcript variants.

Recommended Dilutions

WB	1:500 - 1:1000
IHC-P	1:50 - 1:100

Immunogen Information

Gene ID

3611

Swiss Prot

Q13418

Immunogen

Recombinant fusion protein containing a sequence corresponding to amino acids 1-260 of human ILK (NP_001014795.1).

Synonyms

P59; ILK-1; ILK-2; p59ILK; HEL-S-28; ILK

Contact



www.abclonal.com

Product Information

Source

Rabbit

Isotype

IgG

Purification

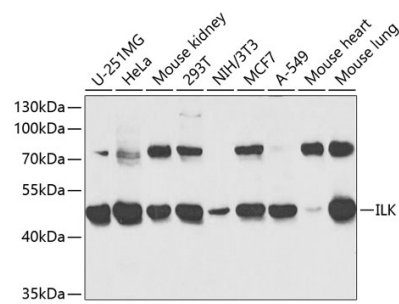
Affinity purification

Storage

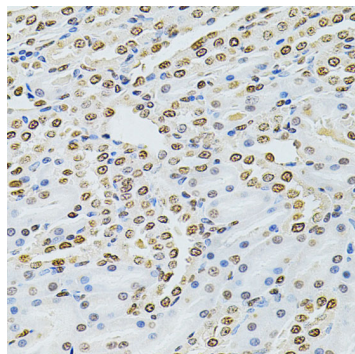
Store at -20°C. Avoid freeze / thaw cycles.

Buffer: PBS with 0.02% sodium azide, 50% glycerol, pH 7.3.

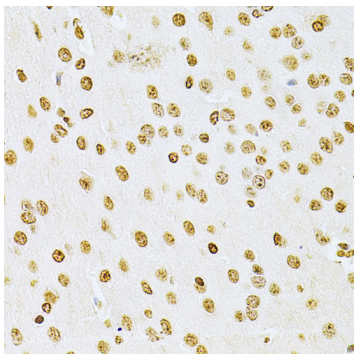
Validation Data



Western blot analysis of extracts of various cell lines, using ILK antibody (A0901) at 1:1000 dilution. Secondary antibody: HRP Goat Anti-Rabbit IgG (H+L) (A5014) at 1:10000 dilution. Lysates/proteins: 25µg per lane. Blocking buffer: 3% nonfat dry milk in TBST.



Immunohistochemistry analysis of paraffin-embedded rat kidney using ILK Antibody (A0901) at dilution of 1:200 (40x lens).Perform microwave antigen retrieval with 10 mM PBS buffer pH 7.2 before commencing with IHC staining protocol.



Immunohistochemistry analysis of paraffin-embedded mouse brain using ILK Antibody (A0901) at dilution of 1:200 (40x lens).Perform microwave antigen retrieval with 10 mM PBS buffer pH 7.2 before commencing with IHC staining protocol.