

A0830

Leader in Biomolecular Solutions for Life Science



## IGF1 Rabbit mAb

Catalog No.: A0830

Recombinant

1 Publications

### Basic Information

#### Observed MW

Refer to figures

#### Calculated MW

22kDa

#### Category

SMab Recombinant Monoclonal Antibody

#### Applications

IHC-P,ELISA

#### Cross-Reactivity

Human,Mouse

#### CloneNo number

ARC0505

### Background

The protein encoded by this gene is similar to insulin in function and structure and is a member of a family of proteins involved in mediating growth and development. The encoded protein is processed from a precursor, bound by a specific receptor, and secreted. Defects in this gene are a cause of insulin-like growth factor I deficiency. Alternative splicing results in multiple transcript variants encoding different isoforms that may undergo similar processing to generate mature protein.

### Recommended Dilutions

IHC-P 1:50 - 1:200

### Immunogen Information

#### Gene ID

3479

#### Swiss Prot

P05019

#### Immunogen

A synthetic peptide corresponding to a sequence within amino acids 70-150 of human IGF1 (P05019).

#### Synonyms

IGF; MGF; IGFI; IGF-I; IGF1

### Contact



[www.abclonal.com](http://www.abclonal.com)

### Product Information

#### Source

Rabbit

#### Isotype

IgG

#### Purification

Affinity purification

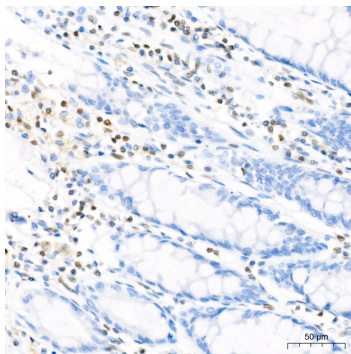
#### Storage

Store at -20°C. Avoid freeze / thaw cycles.

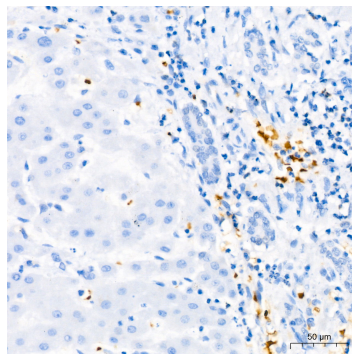
Buffer: PBS with 0.02% sodium azide,0.05% BSA,50% glycerol,pH7.3.

## Validation Data

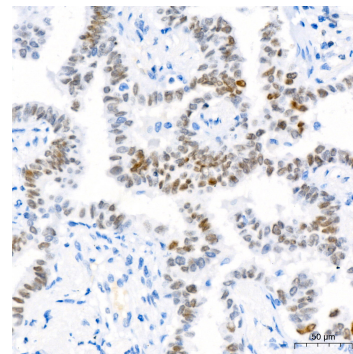
---



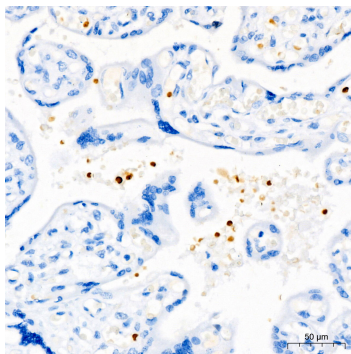
Immunohistochemistry analysis of IGF1 in paraffin-embedded human colon using IGF1 Rabbit mAb (A0830) at dilution of 1:200 (40x lens). Perform high pressure antigen retrieval with 10 mM Tris/EDTA buffer pH 9.0 before commencing with IHC staining protocol.



Immunohistochemistry analysis of IGF1 in paraffin-embedded human liver using IGF1 Rabbit mAb (A0830) at dilution of 1:200 (40x lens). Perform high pressure antigen retrieval with 10 mM Tris/EDTA buffer pH 9.0 before commencing with IHC staining protocol.



Immunohistochemistry analysis of IGF1 in paraffin-embedded Human lung adenocarcinoma using IGF1 Rabbit mAb (A0830) at dilution of 1:200 (40x lens). Perform high pressure antigen retrieval with 10 mM Tris/EDTA buffer pH 9.0 before commencing with IHC staining protocol.



Immunohistochemistry analysis of IGF1 in paraffin-embedded human placenta using IGF1 Rabbit mAb (A0830) at dilution of 1:200 (40x lens). Perform high pressure antigen retrieval with 10 mM Tris/EDTA buffer pH 9.0 before commencing with IHC staining protocol.