

A0730

Leader in Biomolecular Solutions for Life Science



# Tyro3 Rabbit mAb

Catalog No.: A0730 **Recombinant**

## Basic Information

### Observed MW

130kDa

### Calculated MW

97kDa

### Category

SMab Recombinant Monoclonal Antibody

### Applications

WB, ELISA

### Cross-Reactivity

Human, Mouse, Rat

### CloneNo number

ARC1841

## Background

The gene is part of a 3-member transmembrane receptor kinase receptor family with a processed pseudogene distal on chromosome 15. The encoded protein is activated by the products of the growth arrest-specific gene 6 and protein S genes and is involved in controlling cell survival and proliferation, spermatogenesis, immunoregulation and phagocytosis. The encoded protein has also been identified as a cell entry factor for Ebola and Marburg viruses.

## Recommended Dilutions

WB 1:500 - 1:1000

## Immunogen Information

### Gene ID

7301

### Swiss Prot

Q06418

### Immunogen

A synthetic peptide corresponding to a sequence within amino acids 791-890 of human Tyro3 (Q06418).

### Synonyms

BYK; Dtk; RSE; Rek; Sky; Tif; Etk-2; Tyro3

## Contact



[www.abclonal.com](http://www.abclonal.com)

## Product Information

### Source

Rabbit

### Isotype

IgG

### Purification

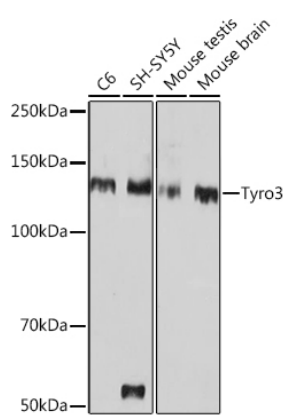
Affinity purification

### Storage

Store at -20°C. Avoid freeze / thaw cycles.

Buffer: PBS with 0.02% sodium azide, 0.05% BSA, 50% glycerol, pH7.3.

Validation Data



Western blot analysis of extracts of various cell lines, using Tyro3 Rabbit mAb (A0730) at 1:1000 dilution.  
Secondary antibody: HRP Goat Anti-Rabbit IgG (H+L) (A5014) at 1:10000 dilution.  
Lysates/proteins: 25µg per lane.  
Blocking buffer: 3% nonfat dry milk in TBST.  
Detection: ECL Basic Kit (RM00020).  
Exposure time: 30s.